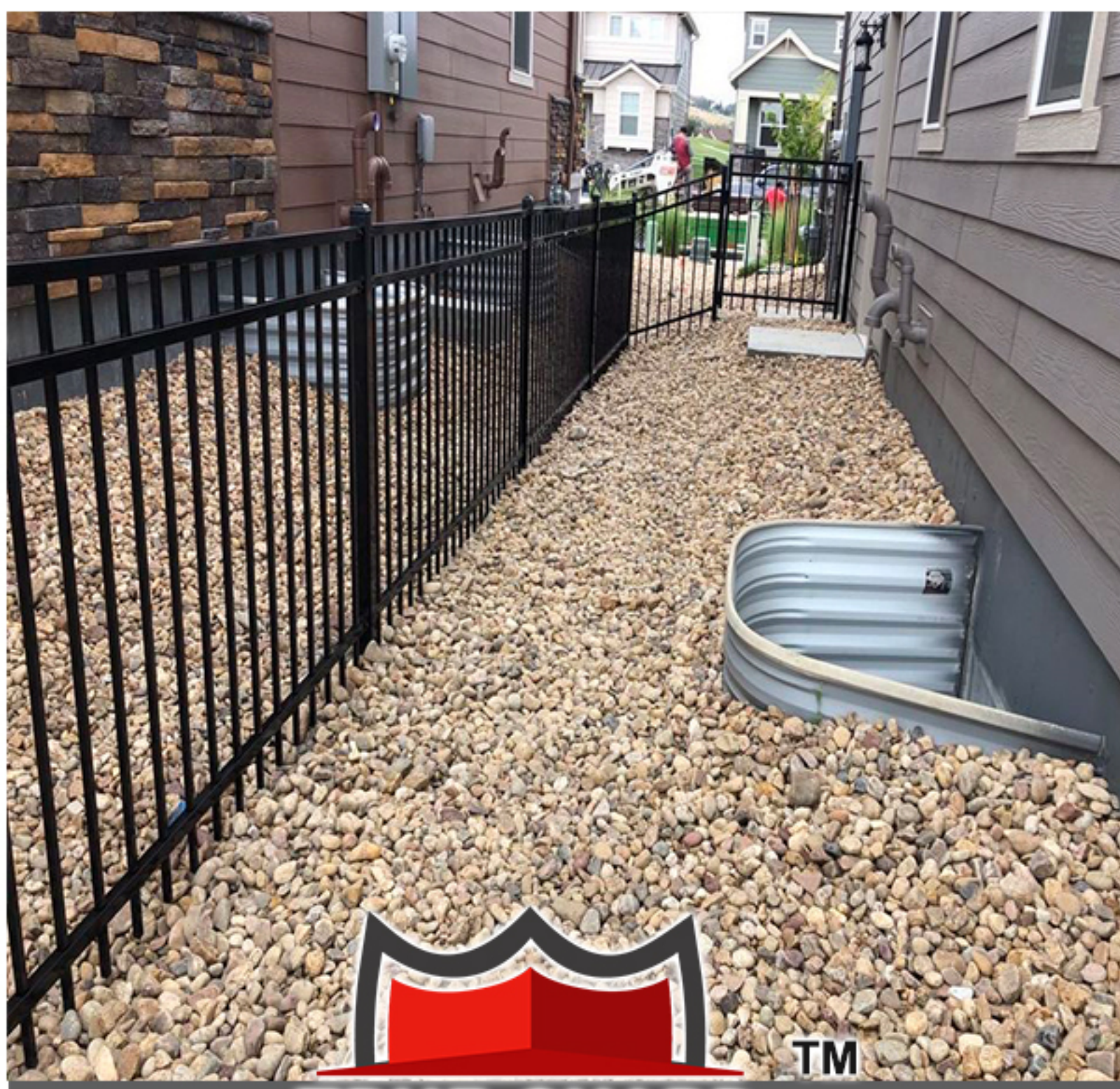


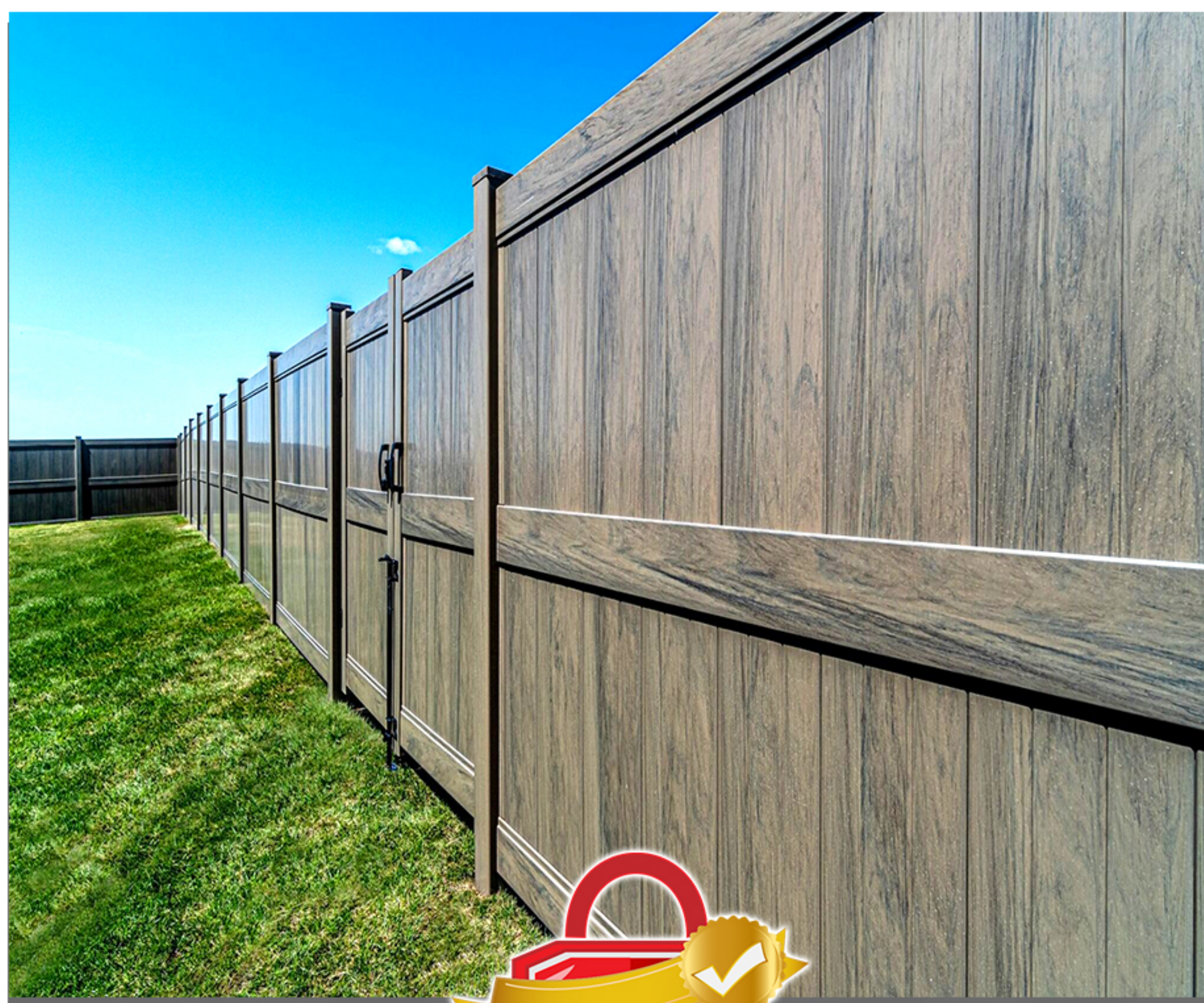


DIRECT FENCING SUPPLY

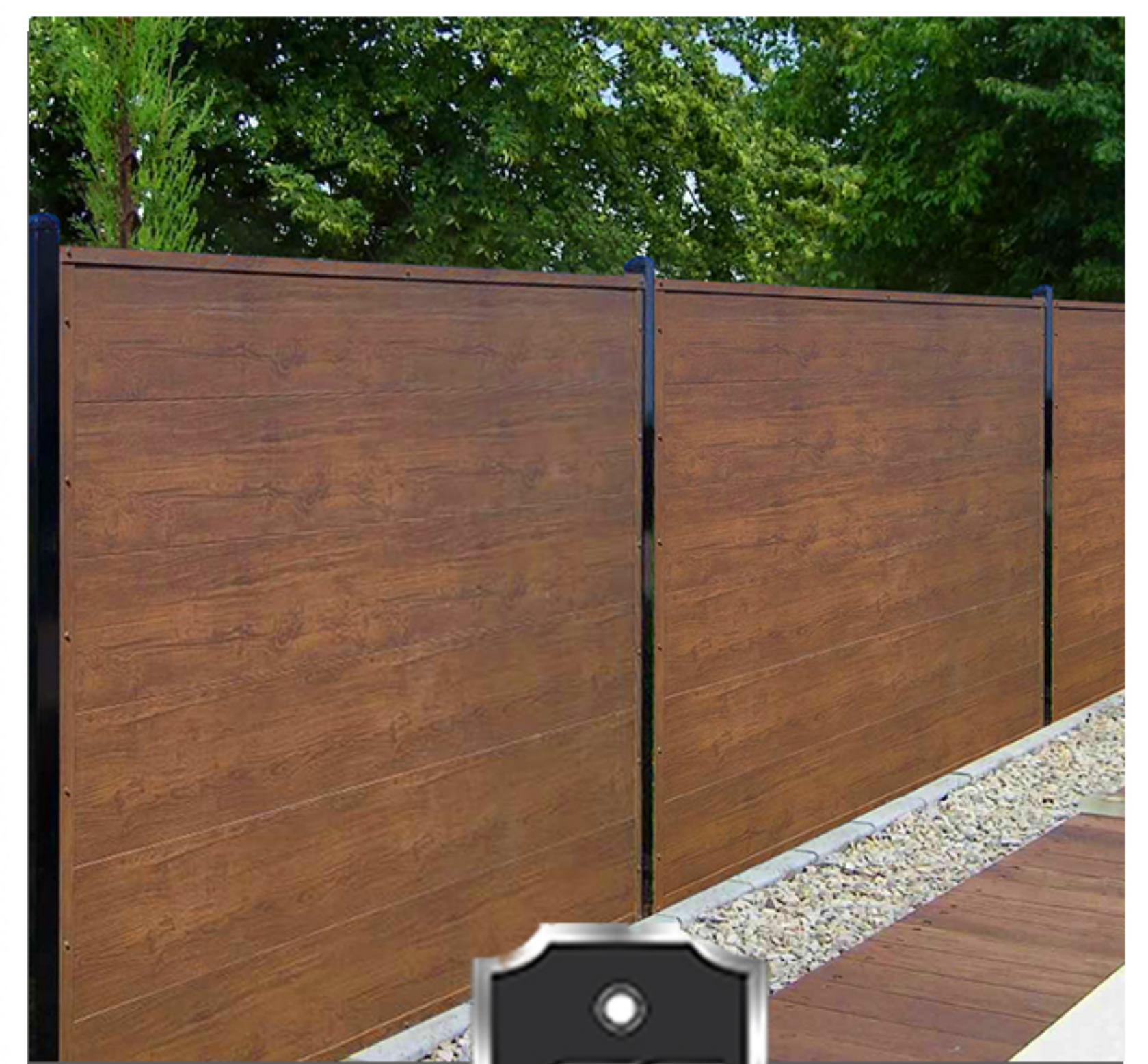
COLLECTION



STEEL PROTECTION SYSTEM



COLOUR LOCK



SOUND GUARD

INNOVATIVE PRODUCTS FOR THE FENCE INDUSTRY



WWW.VINYLFENCECANADA.CA



DIRECT FENCING SUPPLY

COLOUR LOCK™



Tan Jasper Fence

What is Colour Lock™?

Colour Lock™ is a DFS exclusive formula that provides your fence the best fade protection available. Using the highest grade of acrylic formula and additives the bar has been set higher than ever before in fade protection. DFS does not offer the industry standard “PVC colour” in any profile.

Colour Lock™ technology protects the colour and sheen of your PVC fence for much longer than the industry standard (PVC colour). There is no better protection currently available and DFS backs our products with a great warranty. DFS is a Canadian company that understands the importance of withstanding the harsh elements and temperature swings. Many claim to make a quality PVC coloured product, but you should demand the best. Make the right choice and purchase a Colour Lock™ fence and not just a standard PVC colour. You want your customer's fence to look great for years to come and not fall victim to premature fading and chalking, or an inevitable “call back” or warranty claim.

DFS is the leader for innovation in PVC Fencing across Canada. We take great pride in offering our customers the best in colour fade protection.

Quality is our culture, let us prove it to you!



1

CALL TOLL-FREE: 1-888-751-5324

directfencingsupply.ca



WWW.VINYLFENCECANADA.CA



PRIVACY FENCE

JASPER

COLOUR OPTIONS:

* AVAILABLE IN SELECT STYLES *



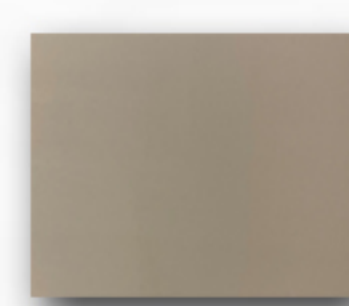
White



Tan



Grey



Adobe



WHITE



Bottom rail with standard aluminum insert.

Height: 3' - 6' Width 8'

Height: 7' - 8' Width 6' w/ Mid-Rail

Post: 5"x5"

Top Rail: 2"x6"

Middle Rail: 2"x6"

Bottom Rail: 2"x6"

Tongue & Groove: 7/8"x11.3"

U Channel: 1 3/8" Deep x 1" Wide

Matching Gate: Available

Contact your sales rep for more details.

CALL TOLL-FREE: 1-888-751-5324





PRIVACY FENCE

JASPER



TAN

Bottom rail with HD aluminum insert.



GREY

Bottom rail with HD aluminum insert.



ADOBE

Bottom rail with HD aluminum insert.



Height: 3' - 6' Width 8'
Height: 7' - 8' Width 6' w/ Mid-Rail
Post: 5"x5"
Top Rail: 2"x6"
Middle Rail: 2"x6"
Bottom Rail: 2"x6"
Tongue & Groove: 7/8"x11.3"
U Channel: 1 3/8" Deep x 1" Wide
Matching Gate: Available
Contact your sales rep for more details.





PRIVACY FENCE

JASPER BOREAL SERIES

COLOUR OPTIONS:

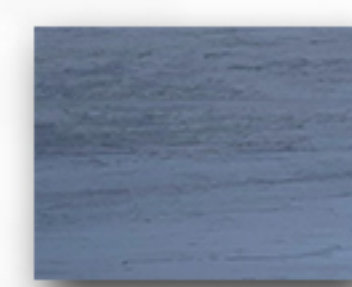
* AVAILABLE IN SELECT STYLES *



Dark Maple



Silver Birch



Grey Oak



DARK MAPLE

All rails with aluminum inserts.
* Mid-Rail Required *



GREY OAK

All rails with aluminum inserts.
* Mid-Rail Required *



SILVER BIRCH

All rails with aluminum inserts.
* Mid-Rail Not Required *



Height: 3' - 6' Width 8'
Height: 7' - 8' Width 6' w/ Mid-Rail
Post: 5"x5"
Top Rail: 2"x6"
Middle Rail: 2"x6"
Bottom Rail: 2"x6"
Tongue & Groove: 7/8"x11.3"
U Channel: 1 3/8" Deep x 1" Wide
Matching Gate: Available
Contact your sales rep for more details.





DIRECT FENCING SUPPLY



NIAGARA

Height: 3'- 8'
 Width: 8'
 Post: 5" x 5"
 Top Rail: 2"x3.5"
 Middle Rail: 2"x3.5" and 2"x6"
 Bottom Rail: 2" x 6", with insert
 Lattice Panel: 11.75" x 91"
 Tongue & Groove: 7/8" x 11.3"
 U Channel: 1 3/8" Deep x 1" Wide
 Matching Gate: Available
 COLOUR available in select profiles only.
 Contact your sales rep for more details .



FAIRMONT

Height: 3'- 8'
 Width: 8'
 Post: 5" x 5"
 Top Rail: 2" x 3.5"
 Middle Rail: 2" x 6"
 Bottom Rail: 2" x 6", with insert
 Picket: 1.5" x 1.5", 22 pcs
 Tongue & Groove: 7/8" x 11.3"
 U Channel: 1 3/8" Deep x 1" Wide
 Matching Gate: Available
 COLOUR available in select profiles only.
 Contact your sales rep for more details .



HADFIELD

Height: 3'- 8'
 Width: 8'
 Post: 5" x 5"
 Top Rail: 2" x 3.5"
 Middle Rail: 2" x 6"
 Bottom Rail: 2" x 6", with insert
 Picket: 1.5" x 1.5", 22 pcs
 Tongue & Groove: 7/8" x 11.3"
 U Channel: 1 3/8" Deep x 1" Wide
 Matching Gate: Available
 COLOUR available in select profiles only.
 Contact your sales rep for more details .



CYPRESS

Height: 3'- 8'
 Width: 8'
 Post: 5" x 5"
 Top Rail: 2"x3.5"
 Middle Rail: 2"x3.5" and 2"x6"
 Bottom Rail: 2" x 6", with insert
 Lattice Panel: 11.75" x 91"
 Tongue & Groove: 7/8" x 11.3"
 U Channel: 1 3/8" Deep x 1" Wide
 Matching Gate: Available
 COLOUR available in select profiles only.
 Contact your sales rep for more details .





SEMI-PRIVACY FENCE



HURON

Height: 3'- 6'
Width: 8'
Post: 5" x 5"
Top Rail: 2" x 6"
Middle Rail: 2" x 3.5"
Bottom Rail: 2" x 6", with insert
Picket: 6" x 7/8"
Matching Gate: Available
COLOUR available in select profiles only.
Contact your sales rep for more details

**CUSTOM HEIGHT OPTIONS AVAILABLE ON REQUEST,
CONTACT YOUR SALES REP FOR MORE DETAILS**

CALL TOLL-FREE: 1-888-751-5324

directfencingsupply.ca



WWW.DFSVINYL.CA/SEMI-PRIVACY-VINYL-FENCE/



PICKET FENCE



CLOVERDALE I

Height: 3'- 6'
 Width: 8'
 Post: 5" x 5"
 Top Rail: 2" x 3.5"
 Bottom Rail: 2"x3.5" or 2"x6" both with inserts
 Picket: 7/8" x 3", 15 pcs
 Picket caps: Spade cap
 Matching Gate: Available
 COLOUR available in select profiles only.
 Contact your sales rep for more details



CLOVERDALE II

Height: 3'- 6'
 Width: 8'
 Post: 5" x 5"
 Top Rail: 2" x 3.5"
 Bottom Rail: 2"x3.5" or 2"x6" both with inserts
 Picket: 7/8" x 3", 15 pcs
 Picket caps: Spade cap
 Matching Gate: Available
 COLOUR available in select profiles only.
 Contact your sales rep for more details



EVERGREEN I

Height: 3'- 6'
 Width: 8'
 Post: 5" x 5"
 Top Rail: 2" x 3.5"
 Bottom Rail: 2"x3.5" or 2"x6" both with inserts
 Picket: 7/8 x 3 pickets x 15 pcs
 Picket caps: Dog Ear Cap
 Matching Gate: Available
 COLOUR available in select profiles only.
 Contact your sales rep for more details



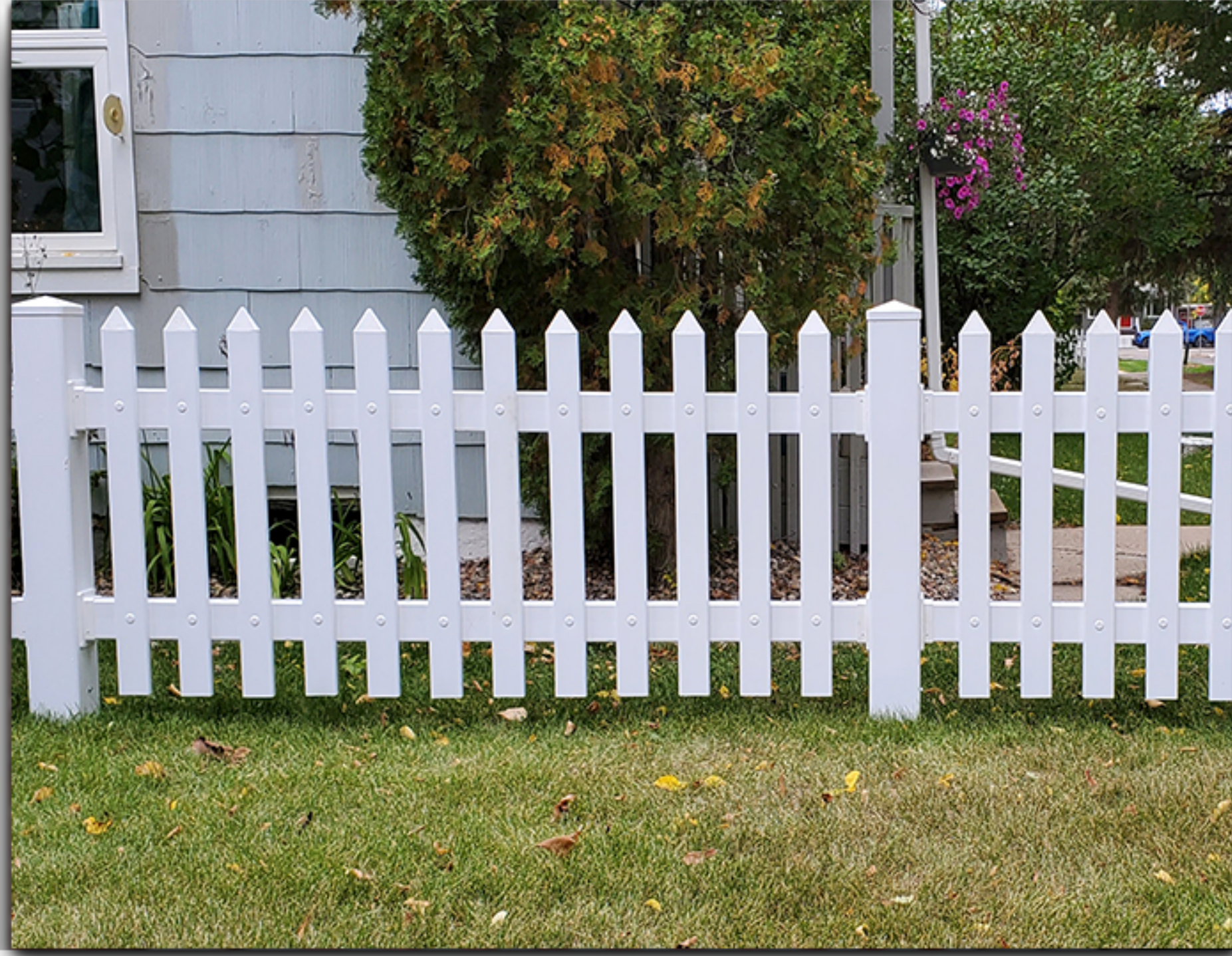
EVERGREEN II

Height: 3'- 6'
 Width: 8'
 Post: 5" x 5"
 Top Rail: 2" x 3.5"
 Bottom Rail: 2"x3.5" or 2"x6" both with inserts
 Picket: 7/8" x 3", 15 pcs
 Picket caps: Dog Ear Cap
 Matching Gate: Available
 COLOUR available in select profiles only.
 Contact your sales rep for more details





DIRECT FENCING SUPPLY



ELMS GATE

Height: 3'- 6"
 Width: 8'
 Post: 5" x 5"
 Top Rail: 2" x 3.5"
 Bottom Rail: 2"x3.5" or 2"x6" both with inserts
 Picket: 7/8" x 3", 15 pcs, fixed on the outside of rail
 Picket caps: Spade Cap
 Matching Gate: Available
 COLOUR available in select profiles only.
 Contact your sales rep for more details



ELMS GATE II

Height: 3'- 6"
 Width: 8'
 Post: 5" x 5"
 Top Rail: 2" x 3.5"
 Bottom Rail: 2"x3.5" or 2"x6" both with inserts
 Picket: 7/8" x 3", 15 pcs, fixed on the outside of rail
 Picket caps: Spade Cap
 Matching Gate: Available
 COLOUR available in select profiles only.
 Contact your sales rep for more details



OAKSIDE

Height: 3'- 6"
 Width: 8'
 Post: 5" x 5"
 Top Rail: 2" x 3.5"
 Bottom Rail: 2"x3.5" or 2"x6" both with inserts
 Picket: 3" x 7/8", 15 pcs
 Picket caps: Dog Ear Cap
 Matching Gate: Available
 COLOUR available in select profiles only.
 Contact your sales rep for more details



OAKSIDE II

Height: 3'- 6"
 Width: 8'
 Post: 5" x 5"
 Top Rail: 2" x 3.5"
 Bottom Rail: 2"x3.5" or 2"x6" both with inserts
 Picket: 7/8" x 3", 15 pcs, fixed on the outside of rail
 Picket caps: Dog Ear Cap
 Matching Gate: Available
 COLOUR available in select profiles only.
 Contact your sales rep for more details



BIRCHWOOD I

Height: 3'- 6"
 Width: 8'
 Post: 5" x 5"
 Top Rail: 2" x 3.5"
 Bottom Rail: 2"x3.5" or 2"x6" both with inserts
 Pickets: 1.5" x 1.5" 22 pcs
 Picket cap: Sharp Picket Cap
 Matching Gate: Available
 COLOUR available in select profiles only.
 Contact your sales rep for more details





DIRECT FENCING SUPPLY



BIRCHWOOD II

Height: 3'- 6'
Width: 8'
Post: 5" x 5"
Top Rail: 2" x 3.5"
Bottom Rail: 2"x3.5" or 2"x6" both with inserts
Pickets: 1.5" x 1.5" 22 pcs
Picket cap: Sharp Picket Cap
Matching Gate: Available
COLOUR available in select profiles only.
Contact your sales rep for more details

BIRCHWOOD III

Height: 3'- 6'
Width: 8'
Post: 5" x 5"
Top Rail: 2" x 3.5"
Bottom Rail: 2"x3.5" or 2"x6" both with inserts
Pickets: 1.5" x 1.5" 22 pcs
Picket cap: Sharp Picket Cap
Matching Gate: Available
COLOUR available in select profiles only.
Contact your sales rep for more details





POOL FENCE



LAKESIDE

Height: 3'- 6'

Width: 8'

Post: 5" x 5"

Top Rail: 2" x 3.5"

Bottom Rail: 2"x3.5" or 2"x6" both with inserts

Picket: 7/8" x 3", 15 pcs

Matching Gate: Available

COLOUR available in select profiles only.

Contact your sales rep for more details

10

CALL TOLL-FREE: 1-888-751-5324

directfencingsupply.ca



WWW.DFSVINYL.CA/POOL-VINYL-FENCE/



DIRECT FENCING SUPPLY



CLEARBROOK

Height: 3'- 8'
 Width: 8'
 Post: 5" x 5"
 Top Rail: 2" x 3.5"
 Middle Rail: 2" x 3.5"
 Bottom Rail: 2" x 3.5" with insert
 Picket: 1.5" x 1.5", 22 pcs
 Matching Gate: Available
 COLOUR available in select profiles only.
 Contact your sales rep for more details



DRIFTWOOD

Height: 3'- 6'
 Width: 8'
 Post: 5" x 5"
 Top Rail: 2" x 3.5"
 Bottom Rail: 2" x 3.5" with insert
 Picket: 7/8" x 3", 9 pcs and 8 pcs of the other 6" picket
 Matching Gate: Available
 COLOUR available in select profiles only.
 Contact your sales rep for more details



CLEARVIEW

Height: 3'- 6'
 Width: 8'
 Post: 5" x 5"
 Top Rail: 2" x 3.5"
 Bottom Rail: 2" x 3.5" with insert
 Picket: 1.5" x 1.5", 22 pcs
 Matching Gate: Available
 COLOUR available in select profiles only.
 Contact your sales rep for more details





RANCH FENCE



ELDORADO III

Height: 54"
 Width: 8'
 Post: 5" x 5"
 Rail: 1.5" x 5.5"
 Matching Gate: Available
 COLOUR available in select profiles only.
 Contact your sales rep for more details



ELDORADO IV

Height: 54"
 Width: 8'
 Post: 5" x 5"
 Rail: 1.5" x 5.5"
 Matching Gate: Available
 COLOUR available in select profiles only.
 Contact your sales rep for more details



ELDORADO II

Height: 39"
 Width: 8'
 Post: 5" x 5"
 Rail: 1.5" x 5.5"
 Matching Gate: Available
 COLOUR available in select profiles only.
 Contact your sales rep for more details



SUNNYDALE

Height: 54"
 Post: 5" x 5"
 Rail: 1.5" x 5.5"
 Rail Spacing: 3"
 Cross Angle: 20 Degrees
 Matching Gate: Available
 COLOUR available in select profiles only.
 Contact your sales rep for more details





MALDEN



ORNAMENTAL STEEL FENCE

3/4"X3/4"-18GA PICKET | 1-9/16"X1-3/16"X1-9/16"-14GA RAILS | 14GA and 16GA POSTS

Malden steel fences are built with highest grade of rackable materials to offer a strong and durable rackable fence. The ability to rack our residential fences will give your fence a flowing installation no matter the slope of your yard.

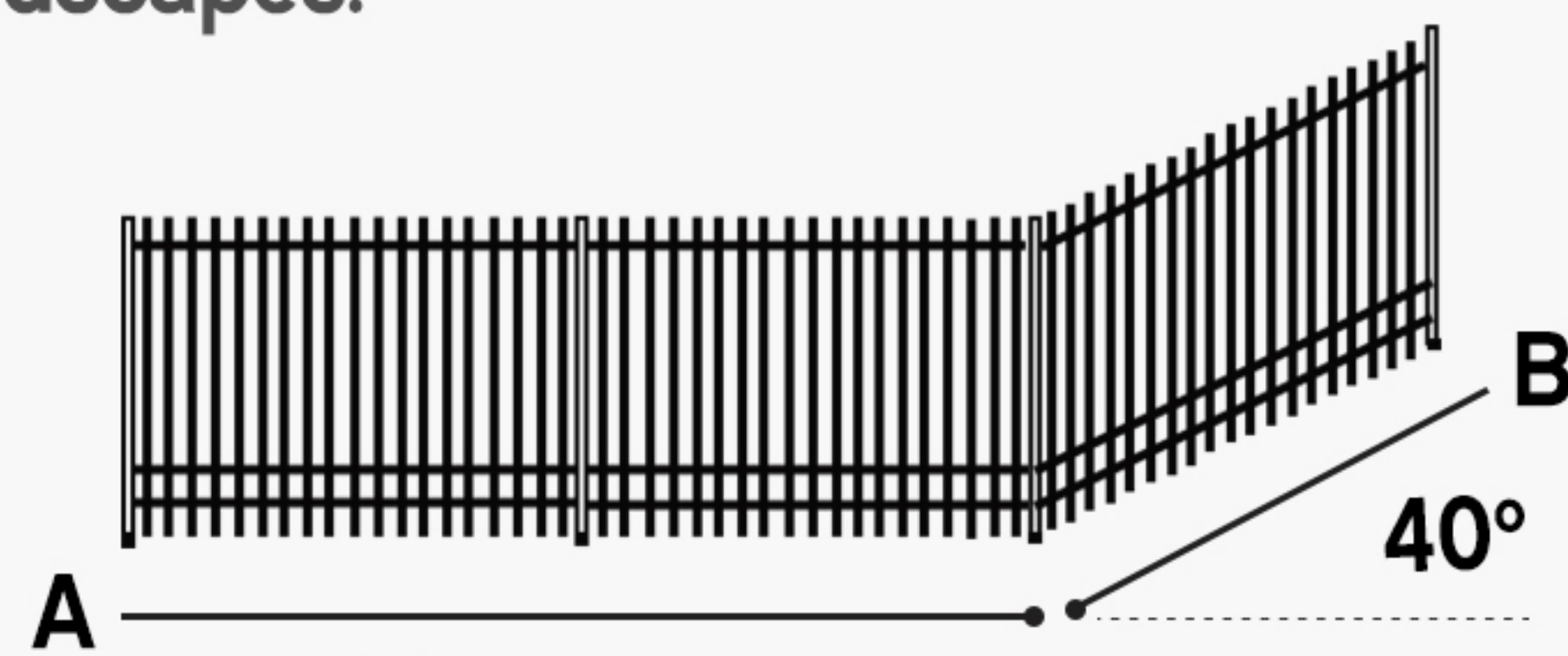


PRIMARY APPLICATIONS

- ▶ Houses
- ▶ Condominiums
- ▶ Town Houses
- ▶ Apartments
- ▶ Cottages
- ▶ High Sloped Areas

RACKABLE PANELS

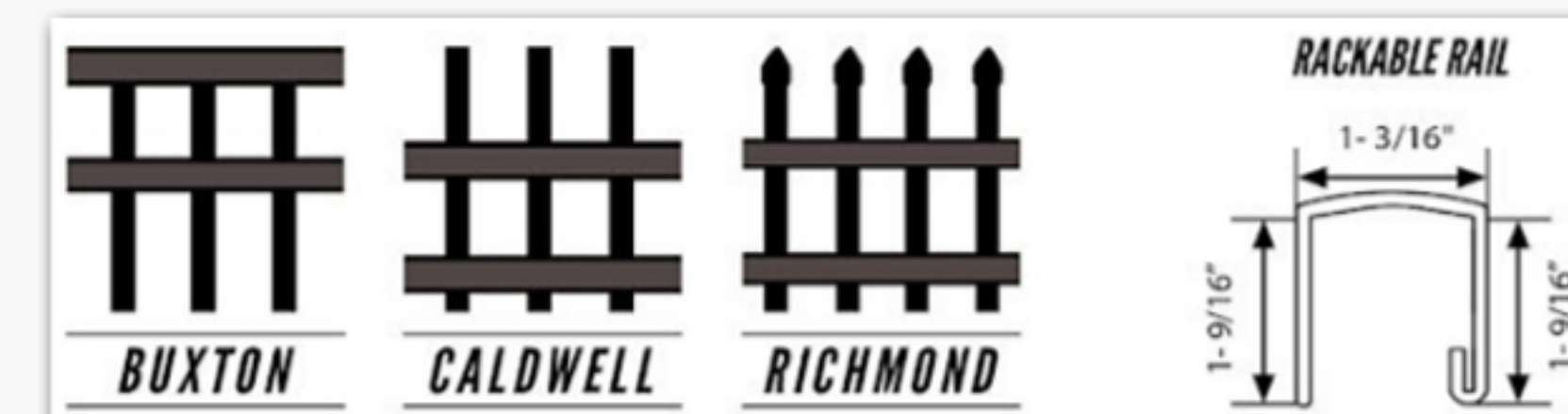
All Malden Metals ornamental steel fencing is fully rackable up to 40 degrees. This will help your fence flow even in the largest sloped landscapes.



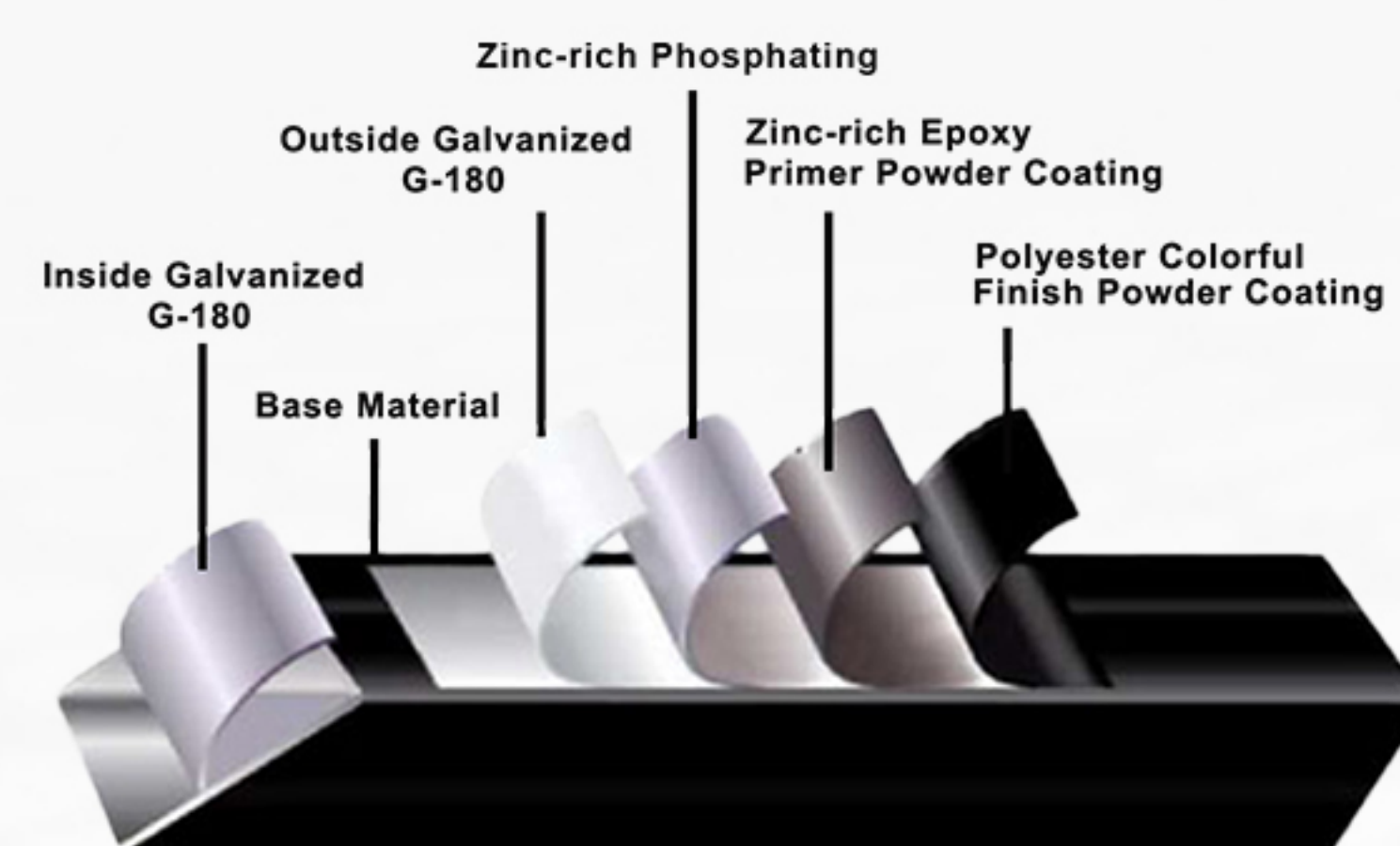
20 YEAR LIMITED WARRANTY

Malden Metals fencing products are manufactured using some of the strongest and top-performing materials in the industry. Malden Metals is extremely confident in the manufacturing of its materials and as so is proud to offer a 20 year limited warranty.

STYLE OPTIONS



MORE LAYERS, MORE PROTECTION



TRUE GUARD™ PROTECTION SYSTEM

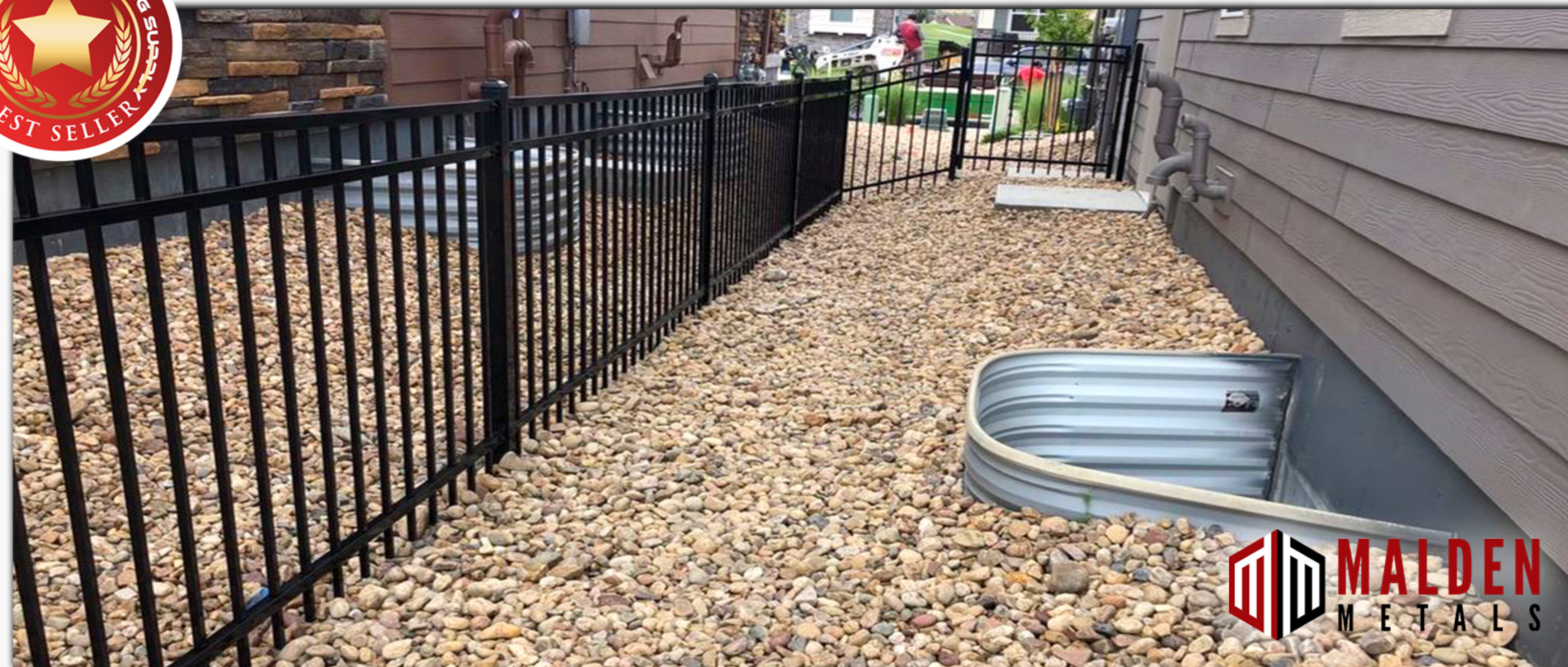
- ▶ To prevent rusting from base material, all of our products are galvanized and have a Zinc Mass of 180g inside and out.
- ▶ To ensure superior adhesion, each of our products undergo seven stages of pre-treatment with zinc-rich phosphate.
- ▶ To cover all welds and cut edges, zinc-rich epoxy primer powder coating are applied.
- ▶ To achieve exceptional anti-corrosion and weather resistant performance, polyester finish powder coating are administered to our products.





ORNAMENTAL FENCE

BUXTON



The Buxton is our top-seller and is very popular because of its sleek, flowing design. The Buxton is great for any job as it offers the security of a sturdy fence, but also the look of a modernized fence.

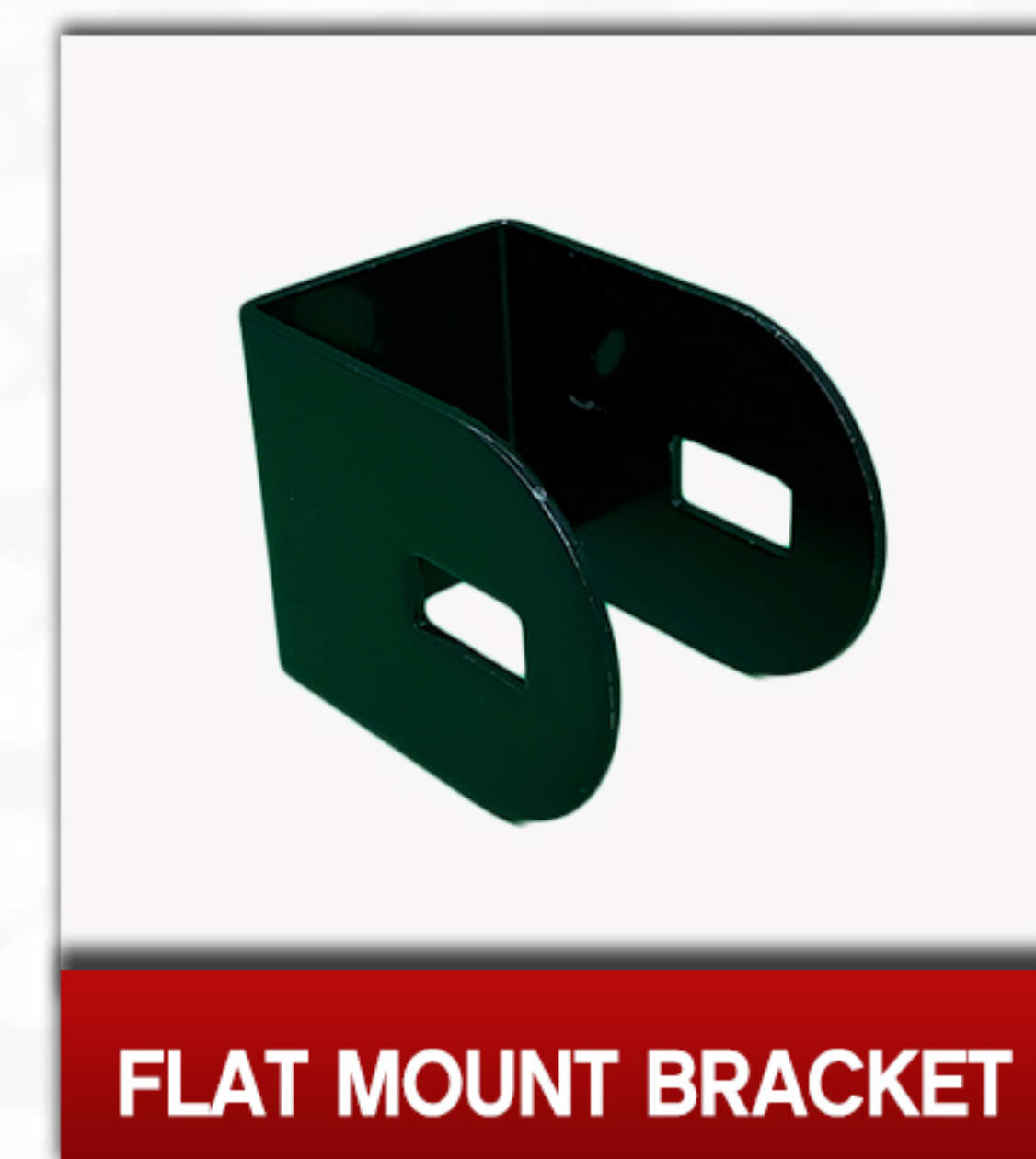
STANDARD PANEL SIZES

- 4' / 46" panel height
- 5' / 58" panel height
- 6' / 70" panel height

STANDARD POST SIZES

- 2" 16GA - 96" and 108"
- 2 1/2" 14GA - 96" and 108"

BRACKET OPTIONS





ORNAMENTAL FENCE

CALDWELL



The Caldwell comes with extended pickets and a uniformed flat top picket. This will give your fence a sense of style, but also a smooth finish. The Caldwell looks great in any application.

STANDARD PANEL SIZES

- 4' / 46" panel height
- 5' / 58" panel height
- 6' / 70" panel height

STANDARD POST SIZES

- 2" 16GA - 96" and 108"
- 2 1/2" 14GA - 96" and 108"

BRACKET OPTIONS





ORNAMENTAL FENCE

RICHMOND



The Richmond is designed to give your fence an eye-catching design. The extended pickets with spear-shaped ends offer security and aesthetics. The Richmond will give any home/business an established look.

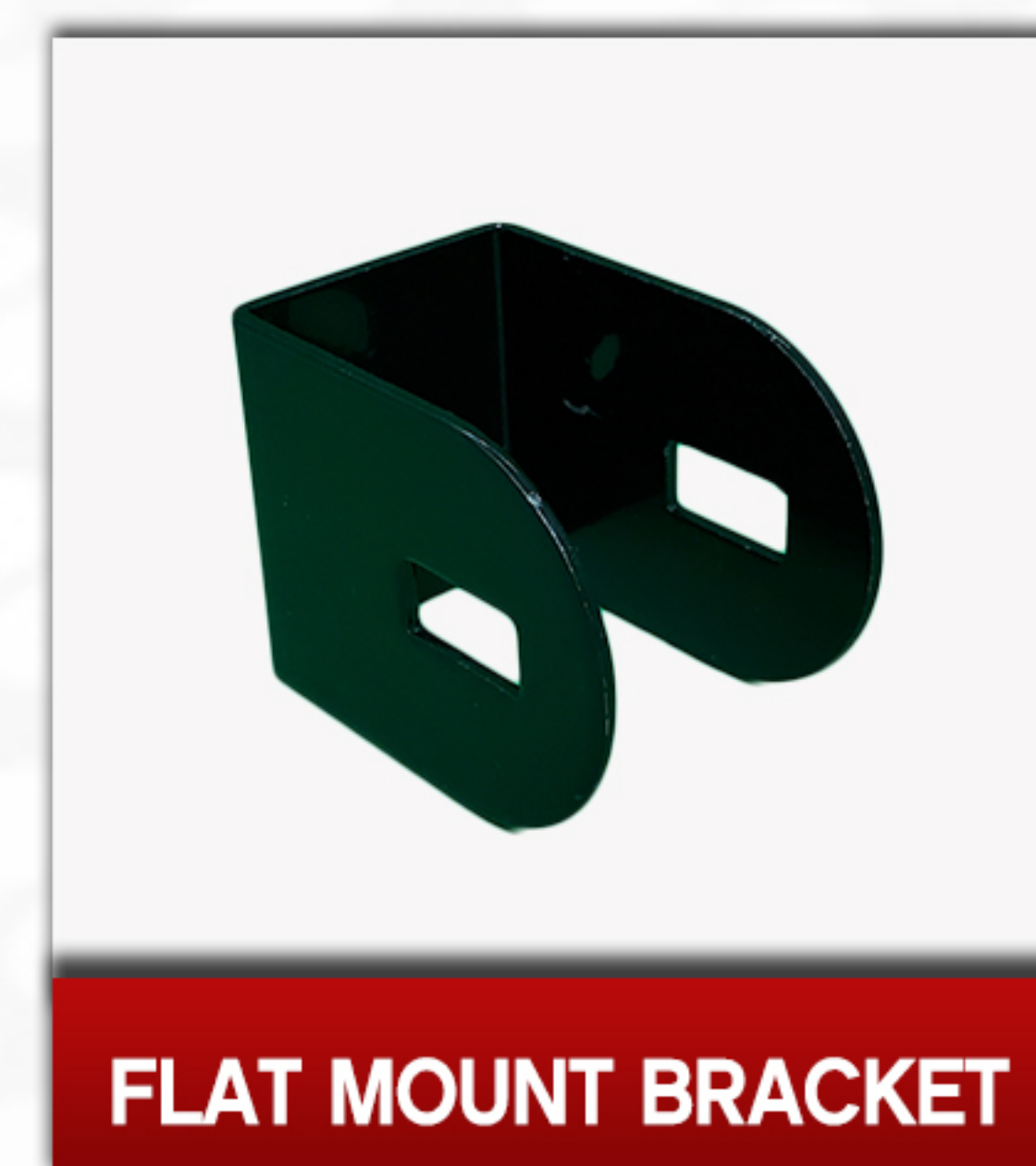
STANDARD PANEL SIZES

- 4' / 46" panel height
- 5' / 58" panel height
- 6' / 70" panel height

STANDARD POST SIZES

- 2" 16GA - 96" and 108"
- 2 1/2" 14GA - 96" and 108"

BRACKET OPTIONS





MALDEN GATES

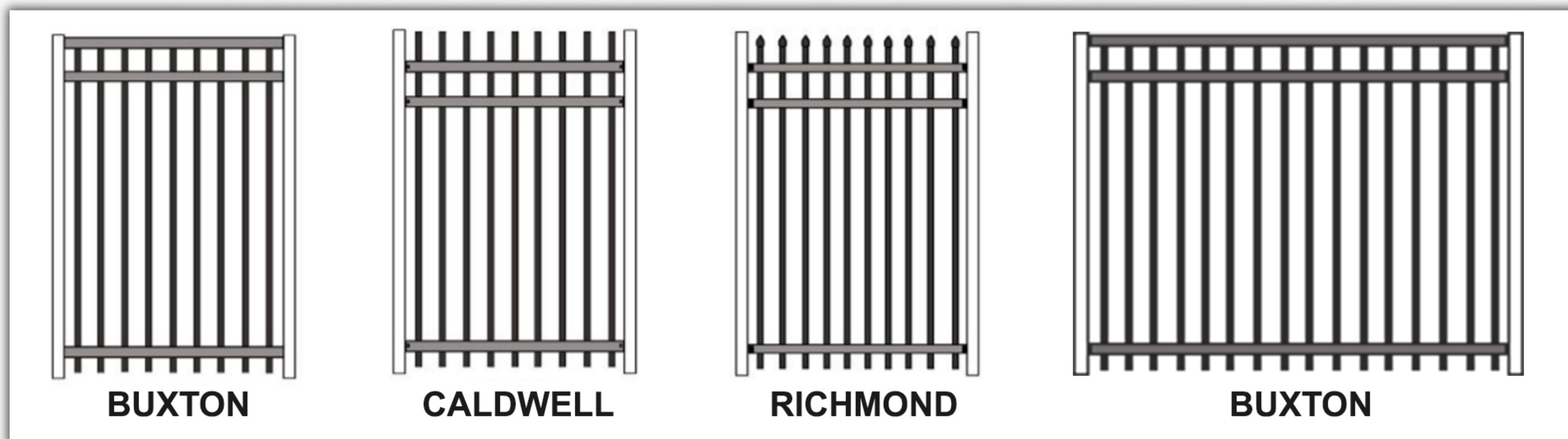
STEEL WALK GATES

Malden Metals steel walk gates are welded at all intersections. The solid, sleek design will flow from fence to gate and are built for Canada's unpredictable weather.



TRUE GUARD™ - 7 STAGES OF PROTECTION

Corrosion is major problem in ornamental steel fences. Malden Metals steel walk gates are pre-galvanized to prevent rusting and corrosion. The gates also go through 7 stages of pre-treatment with zinc-rich phosphate. All welds are powder coated in zinc-rich epoxy primer as well as a polyester finish powder coating. Malden Metals takes corrosion and weather resistance very seriously and as so takes these additional steps to make sure your fence is strong and durable.



PRE-FABBED WALK GATES

* Custom Heights and Sizes Available With Special Order Fabrication *

- ▶ Gates come in widths of 36" and 46"
- ▶ Gate heights are 44", 56" and 68"
- ▶ 1-1/2"x1-1/2"-14ga Rail Dimension
- ▶ 3/4"x3/4"-18GA for the pickets
- ▶ 1-3/4"x1-3/4"-14ga Gate End Dimension

PRE-FABBED DRIVE GATES

* Buxton Stock; Other Styles and Custom Sizes Will Need To Be Fabricated *

- ▶ Gates come in widths of 90.5"
- ▶ Gate Heights are 58" and 68"
- ▶ 1-1/2"x1-1/2"-14ga Rail Dimension
- ▶ 3/4"x3/4"-18GA for the pickets
- ▶ 1-3/4"x1-3/4"-14ga Gate End Dimension

STANDARD HARDWARE





BARRIER FENCE

BARRIER FENCE SOUND WALL SYSTEM

Whether it be commercial, industrial, traffic, or climate-related noise, Barrier Fence has been engineered to provide the utmost reduction of sound for your needs. Our panels are lightweight, easily installed, and require minimal maintenance.



PRIMARY APPLICATIONS

- ▶ Houses
- ▶ Condominiums
- ▶ Town Houses
- ▶ Apartments
- ▶ Cottages
- ▶ High Sloped Areas
- ▶ Swimming Pool/Hot Tub Surrounds
- ▶ New Residential & Commercial Structures
- ▶ Deck & Patio Railings
- ▶ New Residential & Commercial Renovations



SOUND GUARD™

AVAILABLE COLOURS



MADE IN CANADA

INFO@DIRECTFENCINGSUPPLY.CA

CALL TOLL-FREE: 1-888-751-5324

directfencingsupply.ca



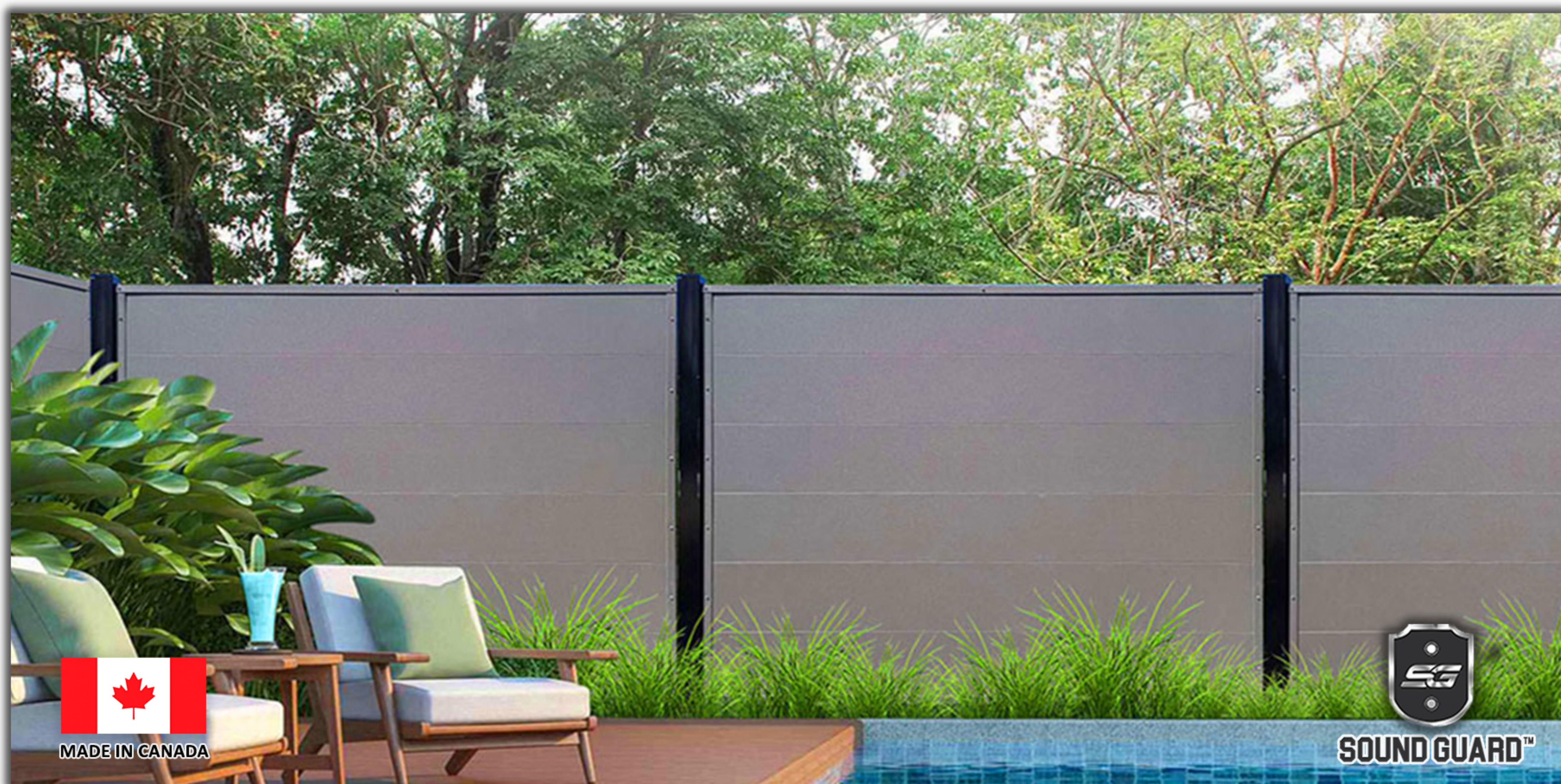
WWW.BARRIERFENCE.CA



BARRIER FENCE

PRODUCT FEATURES

- 🍃 Lightweight, Easy Handling, Easy To Install
- 🍃 Environmentally Friendly
- 🛡️ Impact Resistant
- 🎵 Laboratory Tested Sound Suppression System
STC 25 / OITC 24 Certified
- 💧 Repels Water and Blocks Wind 220 Km/h Certified
- 😊 High Curbside Appeal
- 🎨 Multiple Colours Available
- ↔️ Limited Expansion and Contraction
- 🔥 Fire Resistant
- 👍 30 Year Limited Warranty



BARRIER FENCE

An Industry Leader in Sound Barriers

19

CALL TOLL-FREE: 1-888-751-5324

directfencingsupply.ca



WWW.BARRIERFENCE.CA



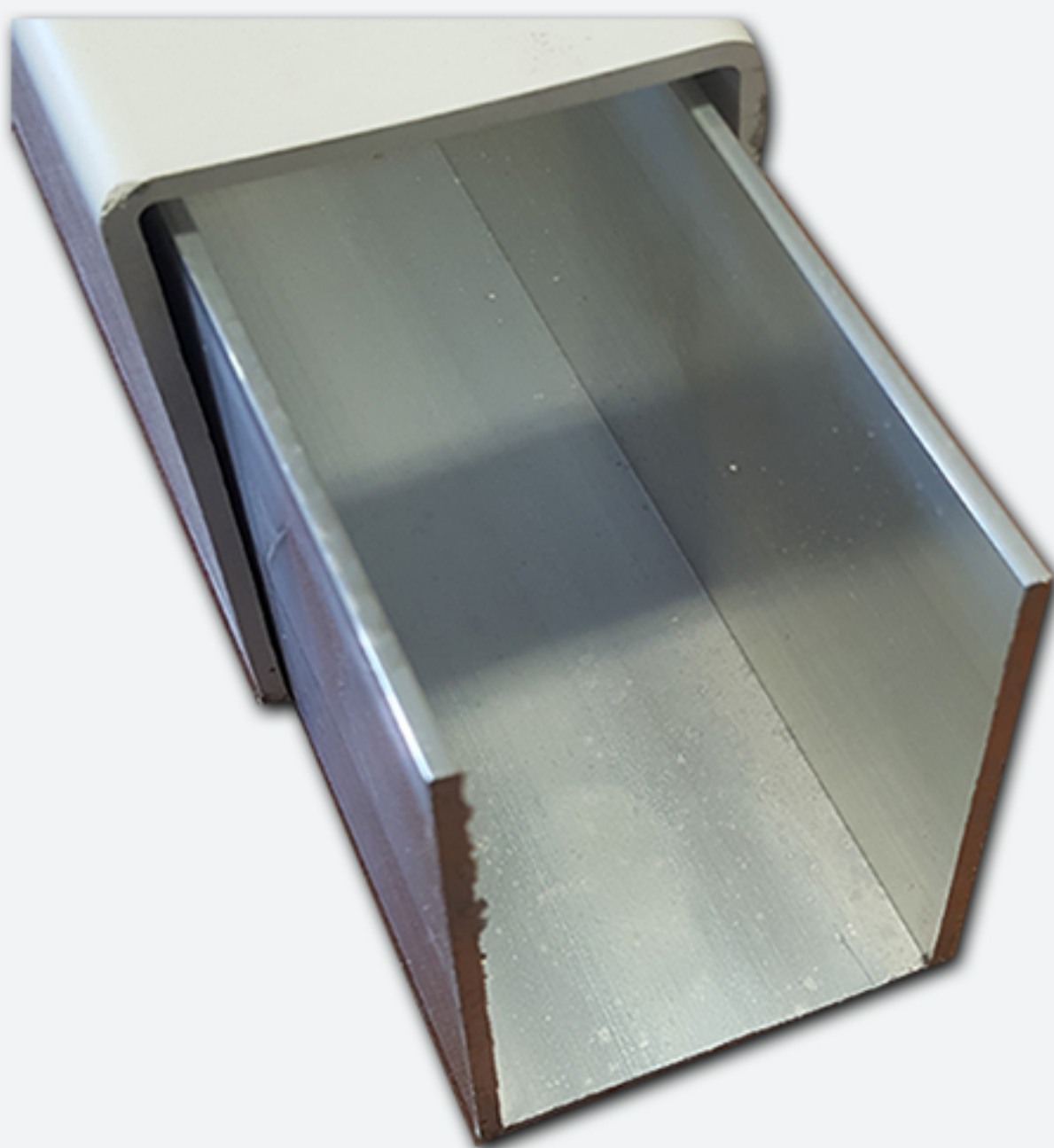
DIRECT FENCING SUPPLY

DISTRIBUTOR FOR NATIONWIDE INDUSTRIES™

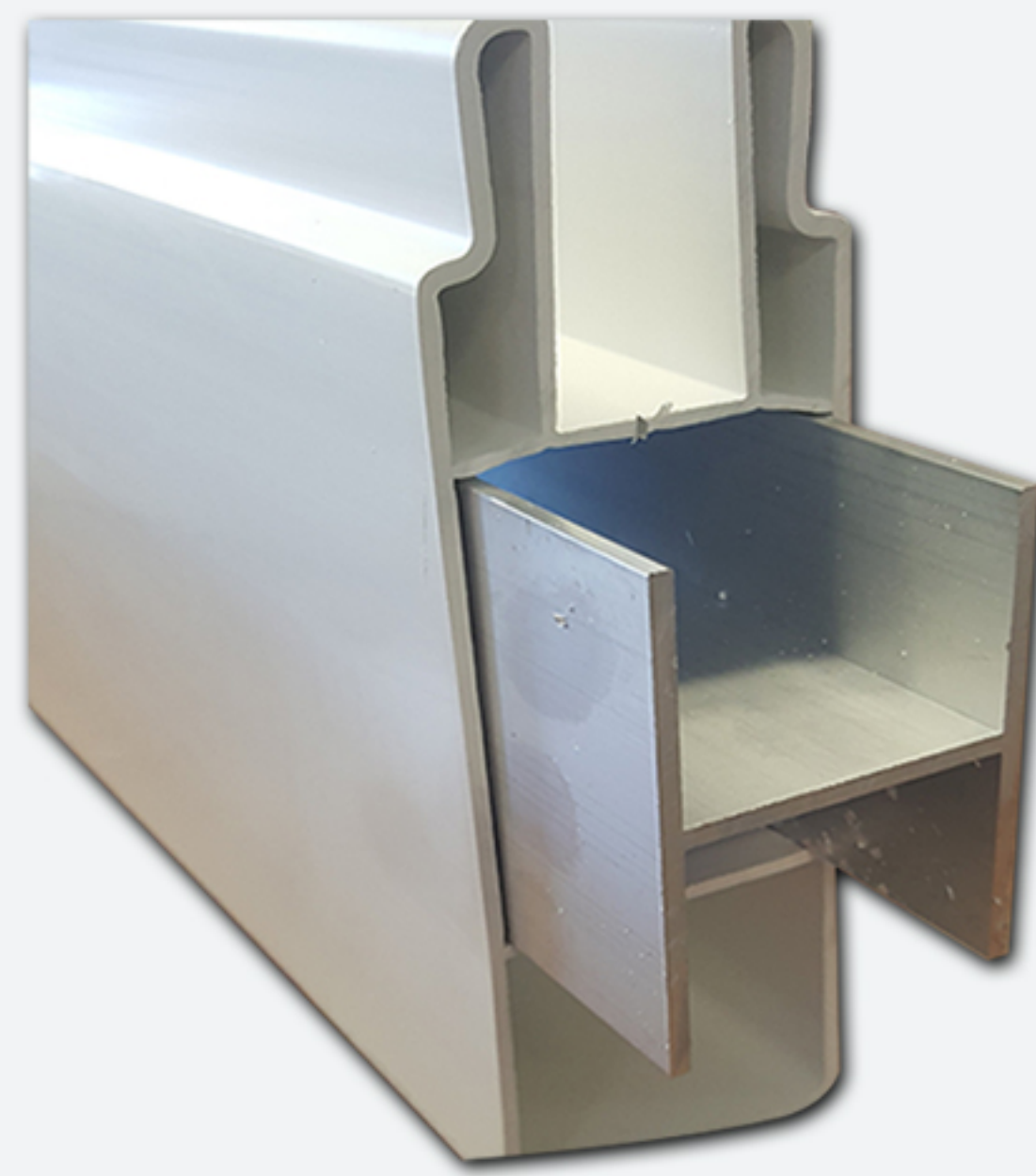




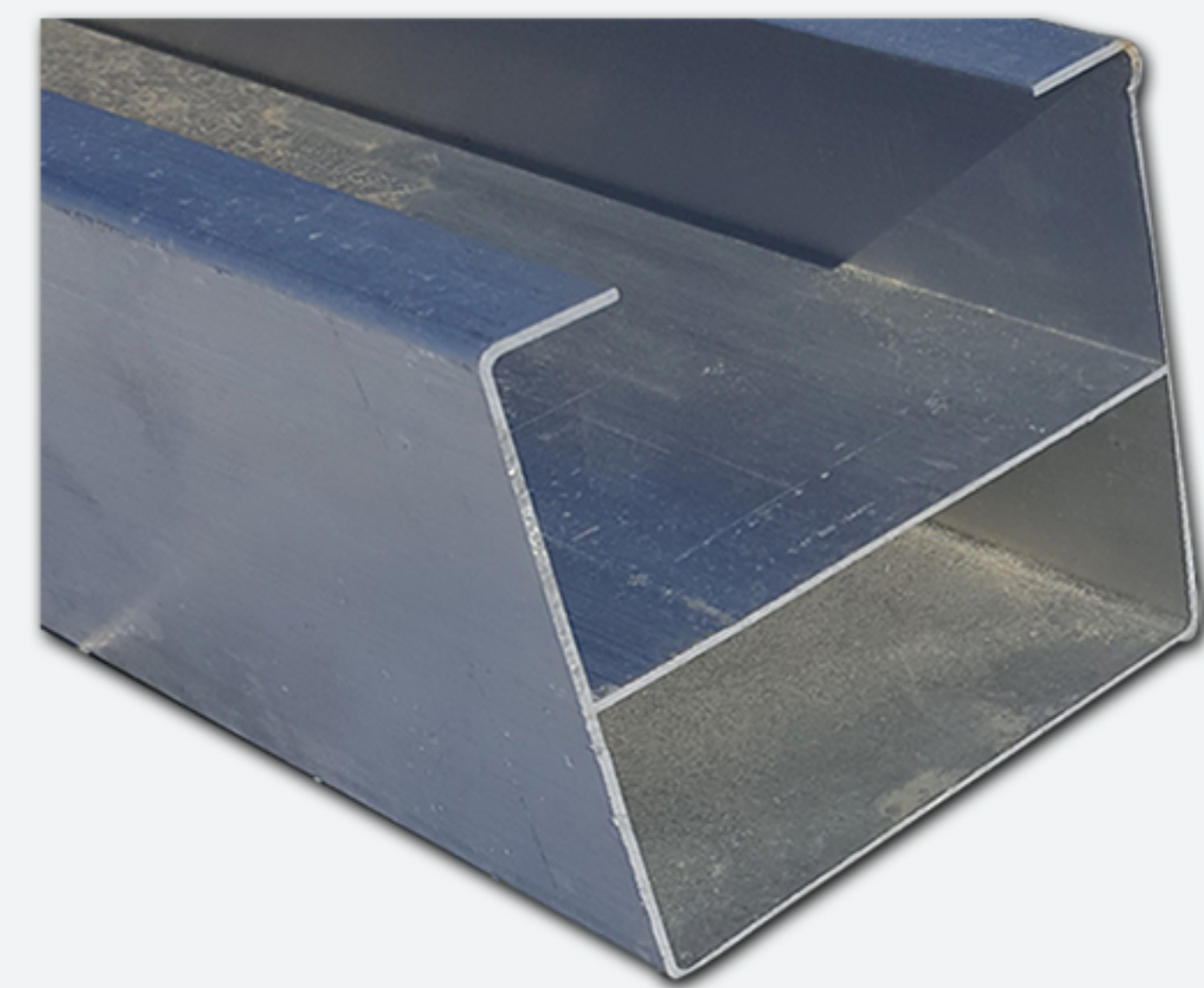
ACCESSORIES



**2.5" X 4"
GATE POST INSERT**



HD ALUMINUM INSERT



**96"
GATE POST INSERT**



2" X 6" RAIL INSERT



48" PIPE WITH BASEPLATE



70" I-BEAM WITH FLANGE



QUICK CONNECT TEMPLATE BRACKET

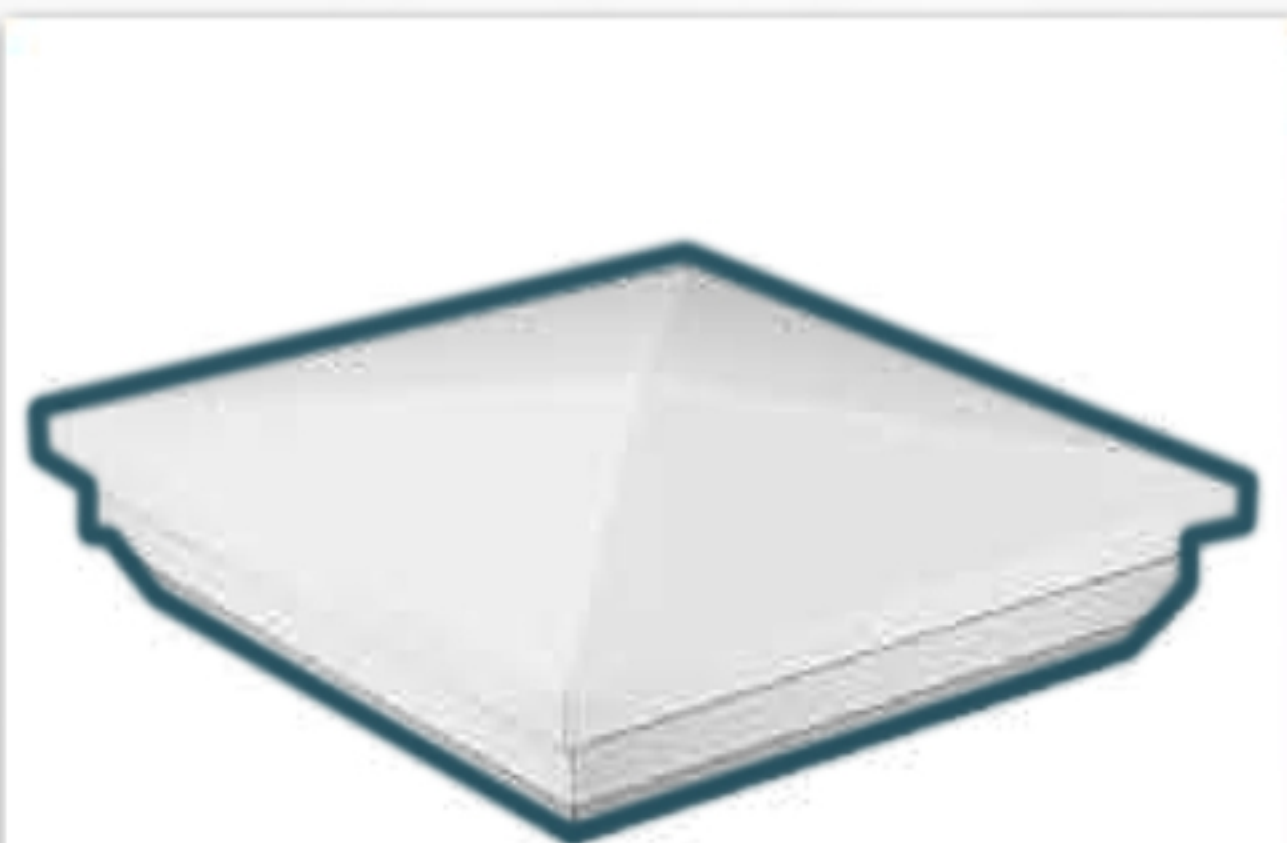


TEMPLATE BRACKET



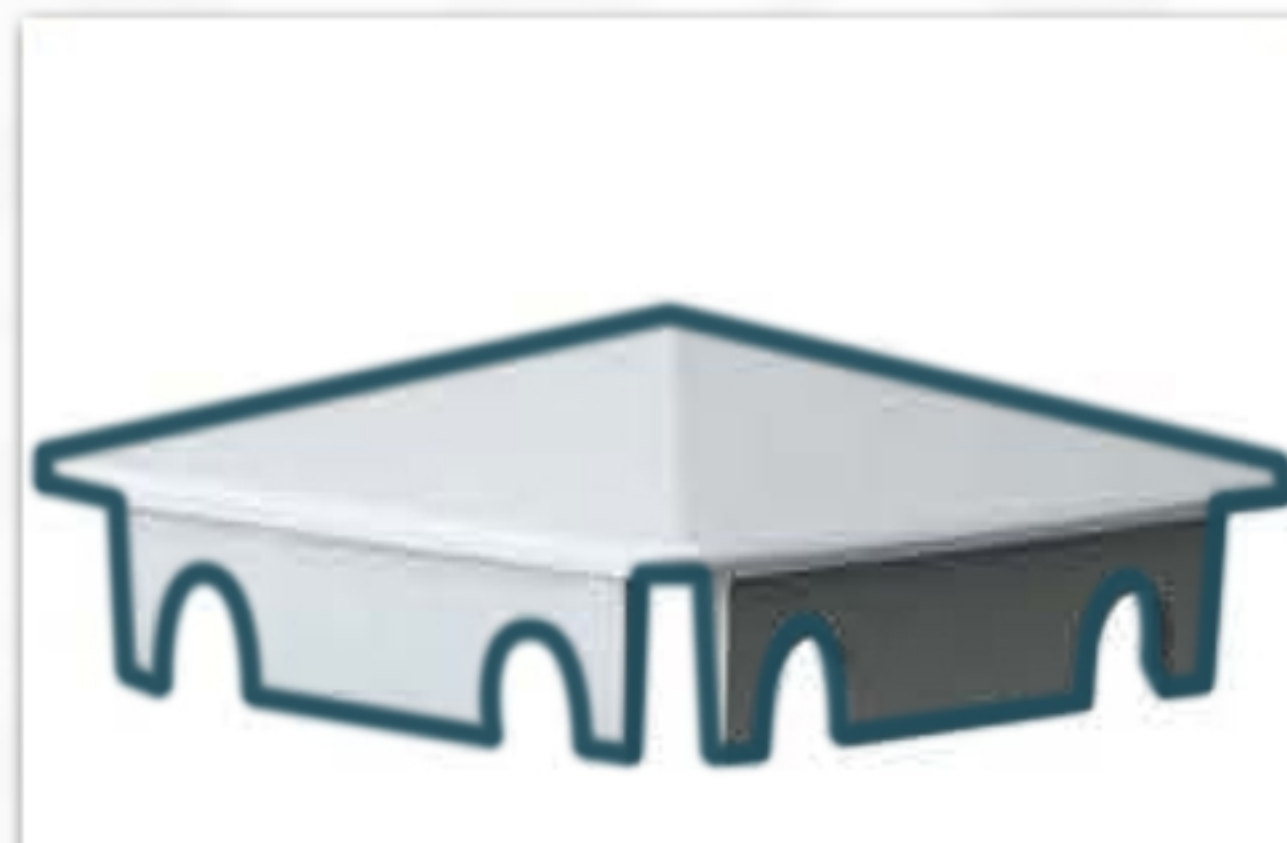


ACCESSORIES



5" available in all colours

NEW ENGLAND CAP



5" in White

INTERNAL FLAT CAP



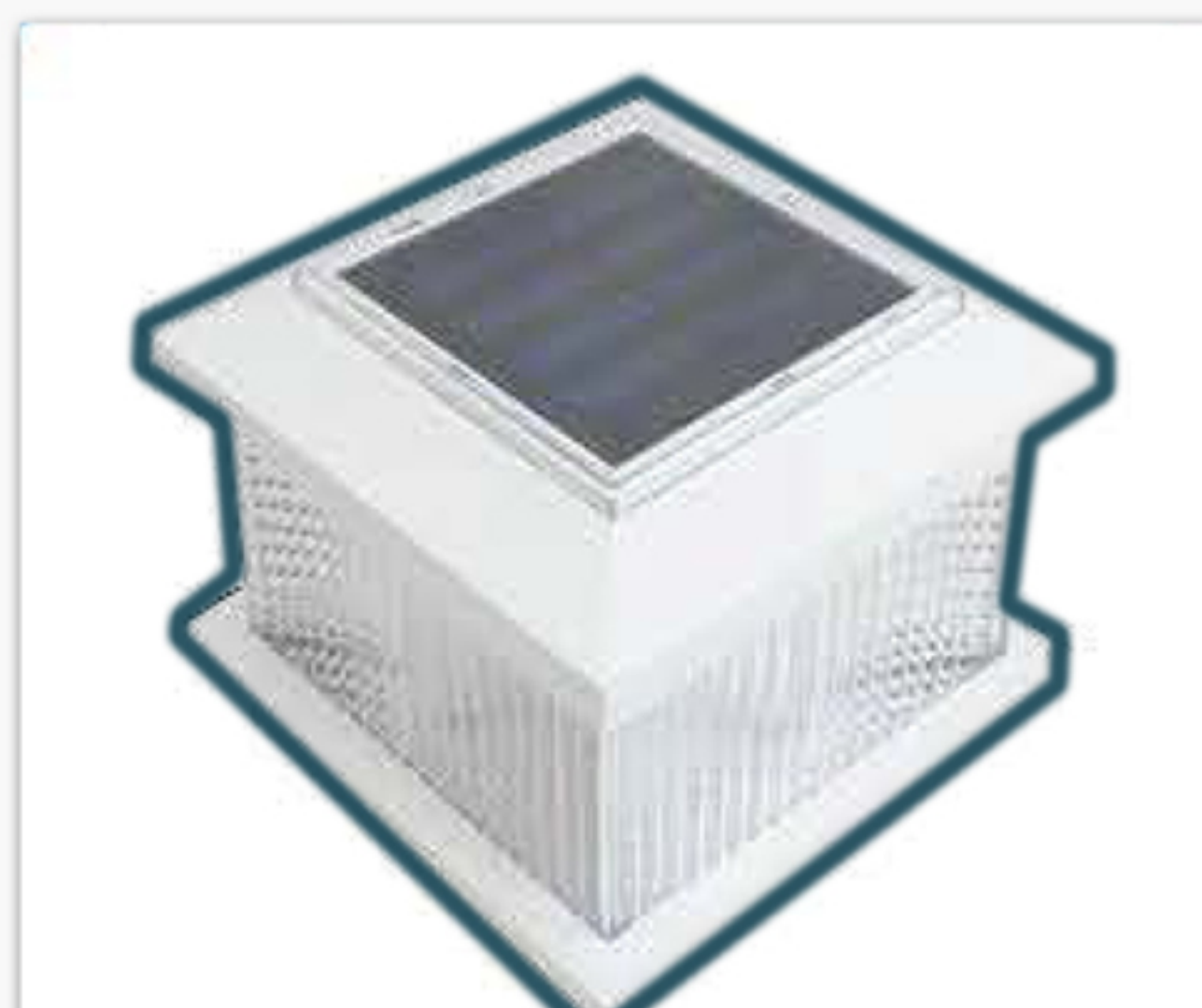
5" available in all colours

EXTERNAL FLAT CAP



5" in White

GOTHIC CAP



5" in White

SOLAR CAP



7/8"x3" in White

DOG EAR PICKET CAP



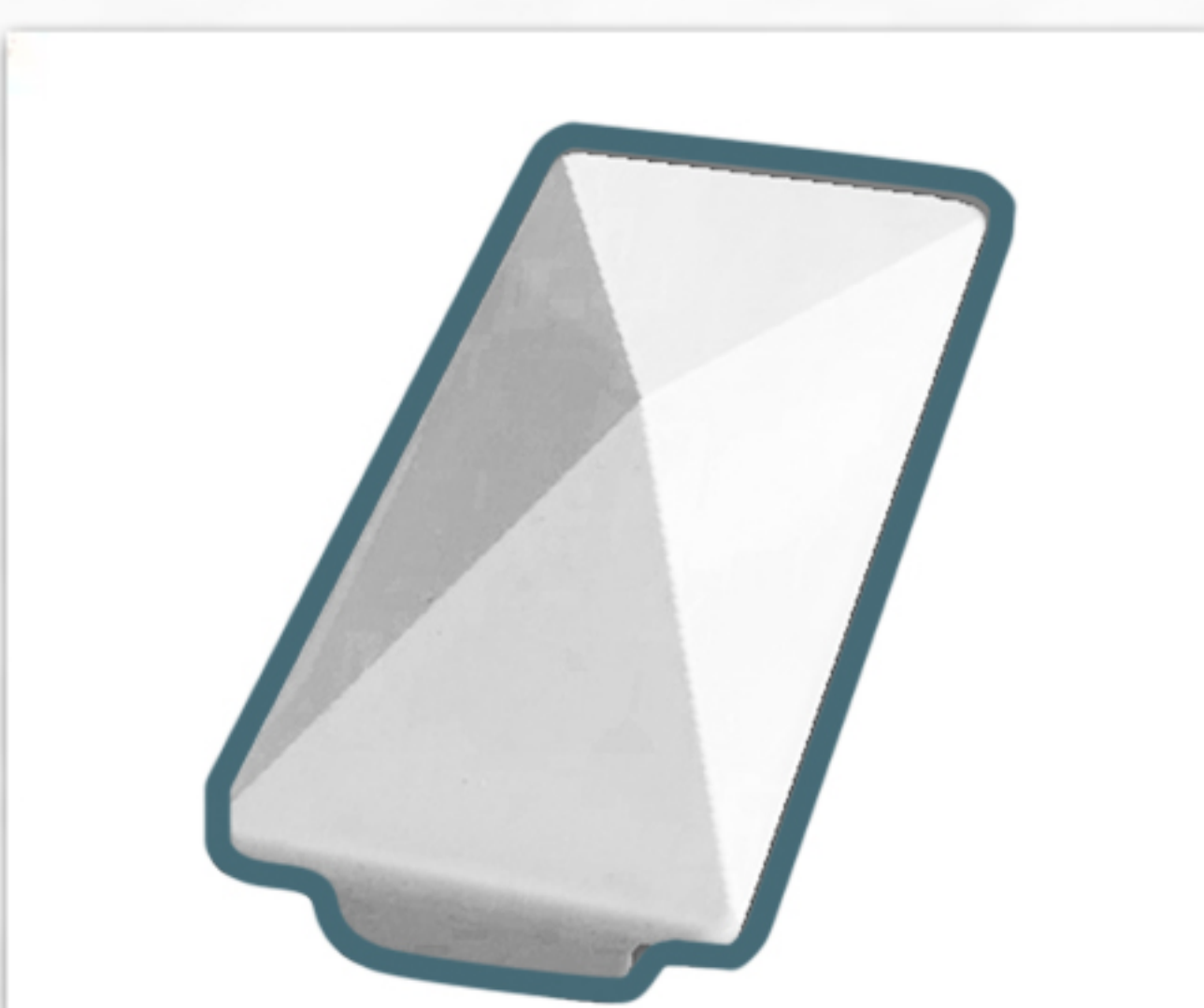
7/8"x3" in White

SPADE PICKET CAP



1.5"x1.5" in White

SPIKE PICKET CAP



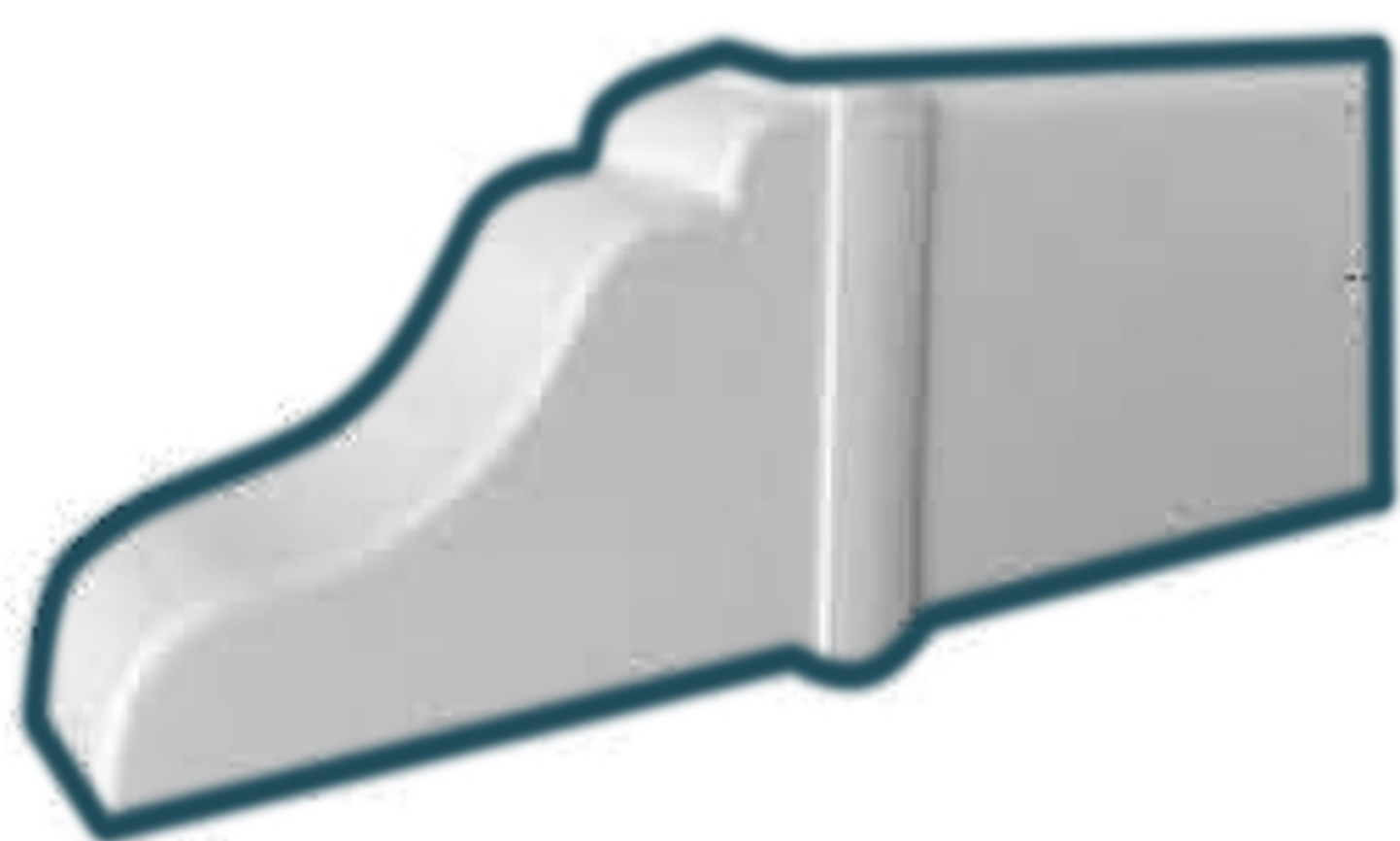
2.5"x4" available in all colours

FLAT GATE CAP



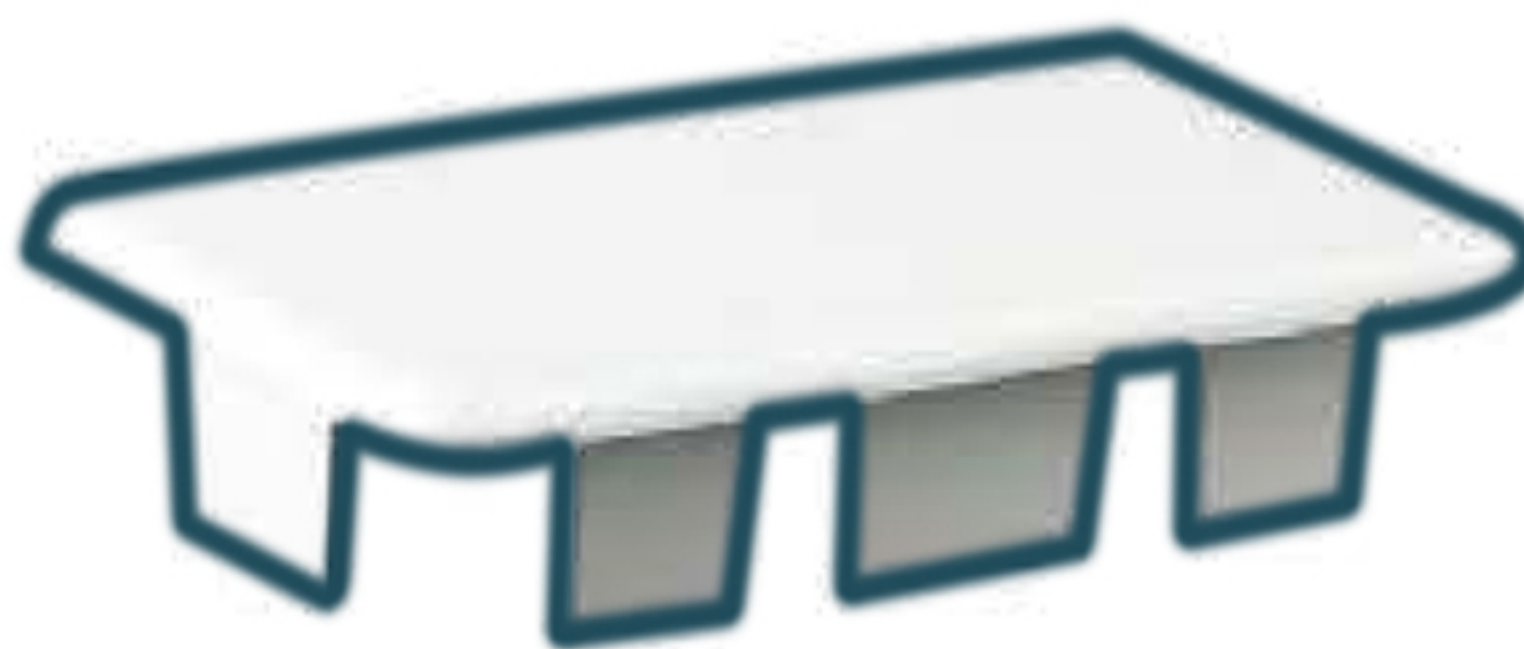


ACCESSORIES



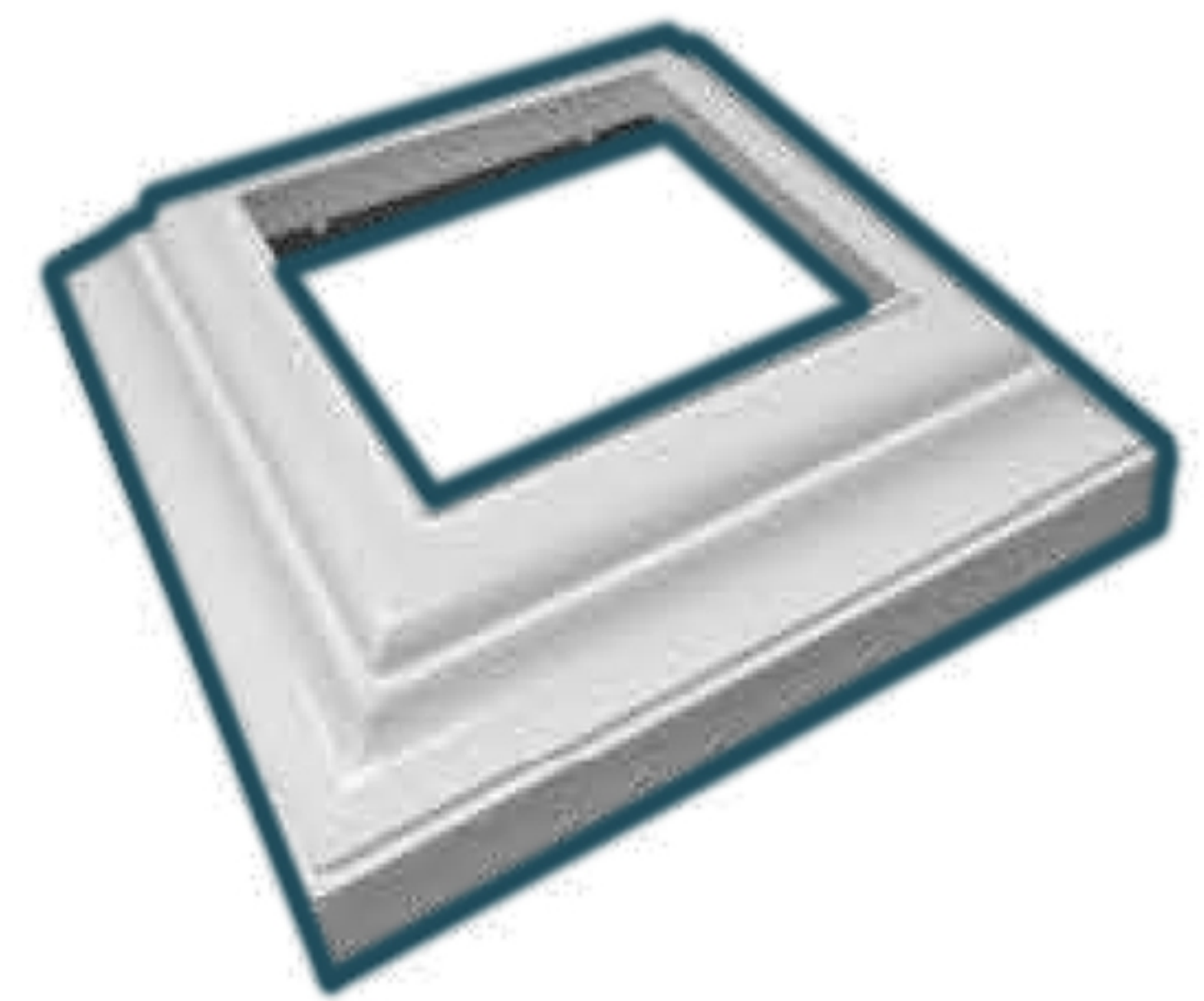
Available for 2" x 3.5" or
2" x 6" rail in White

ARBOR RAIL CAP



Available for 2" x 3.5" or 2" x 6"
in White Rail

FLAT RAIL CAP



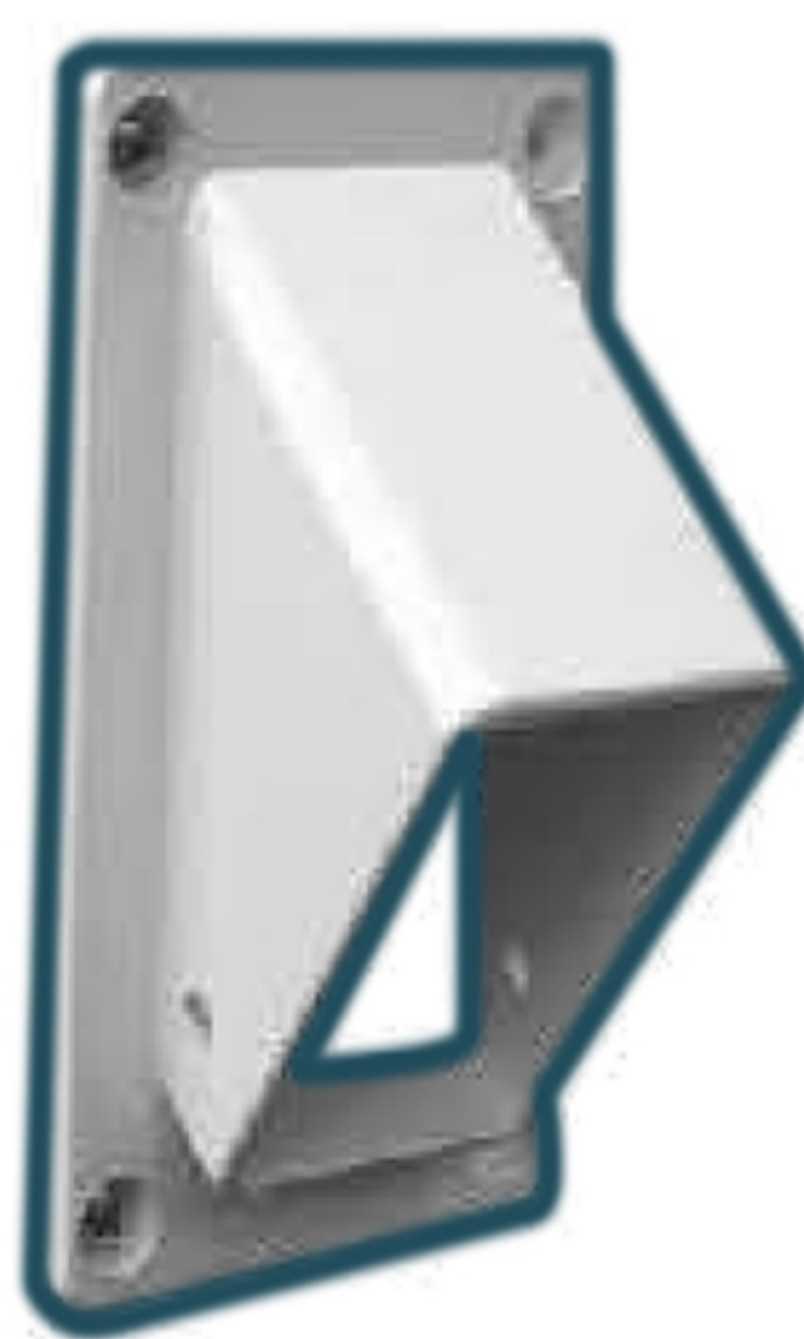
Available for 5" Posts in all colours

2PCS BASE COVER



Available for 2" x 3.5" or 2" x 6"
in White Rail

STRAIGHT RAIL MOUNT



Available in 2 x 3.5" in White

ANGLE RAIL MOUNT



Available in 4" in White

SIDE MOUNT SOLAR LIGHT

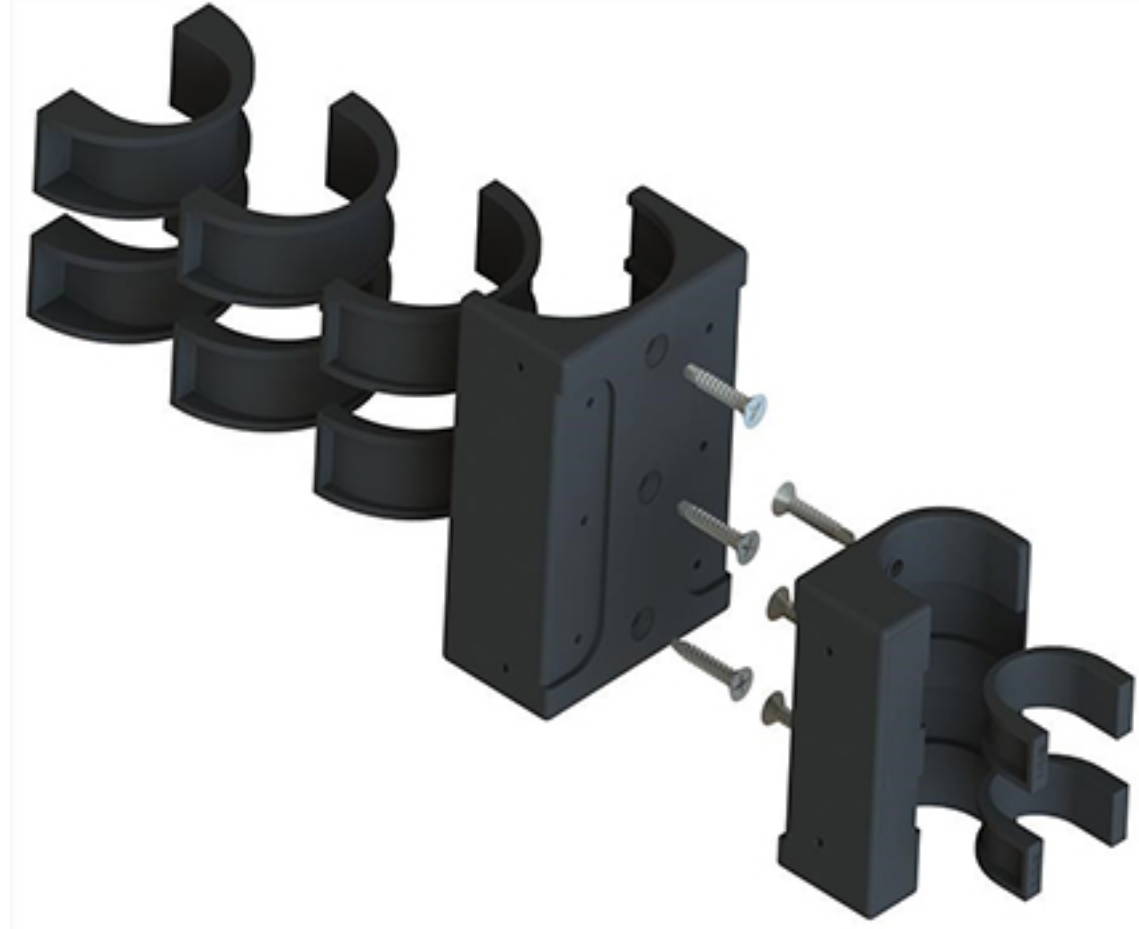




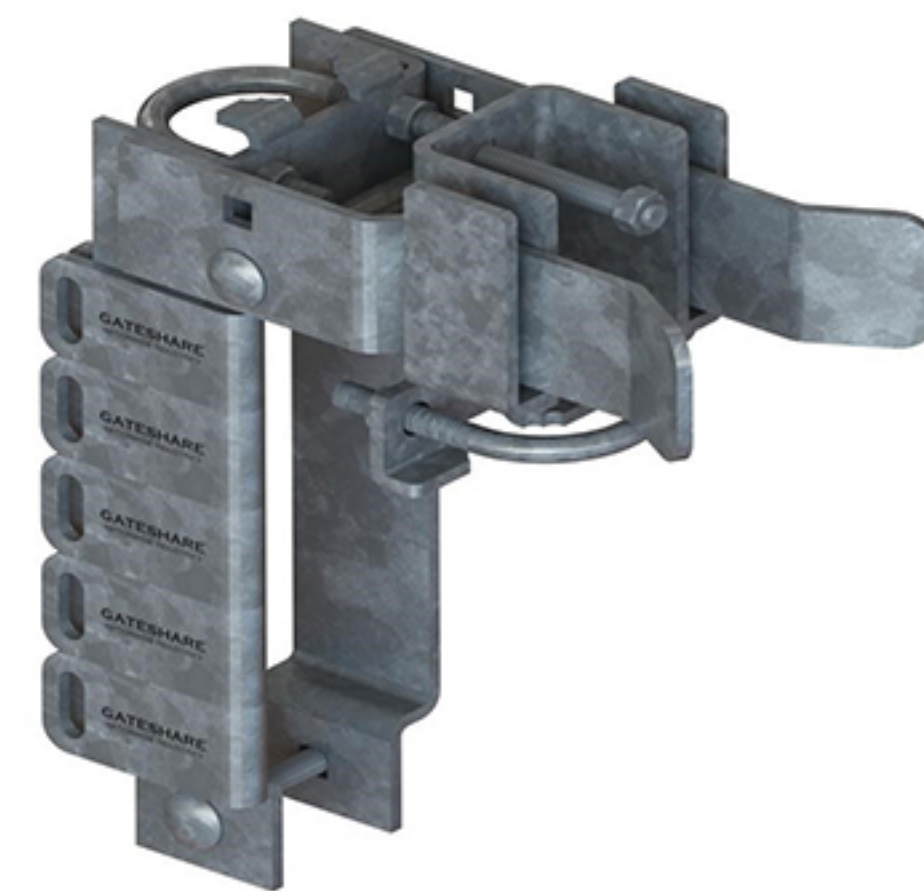
CHAIN-LINK ACCESSORIES



KEYSTONE LATCH



KEYSTONE ROUND POST ADAPTER



GATE SHARE LATCH



TRIDENT 10" POOL LATCH



CORNERSTONE 200 ROUND POST



HEAVY -DUTY SELF CLOSING GATE HINGE



CANTILEVER ROLLER



KEYSTONE PANICLATCH ROUND POS



PANIC BAR KIT



MECHANICAL TWO-SIDED KEYPAD LEVER LOCK





DIRECT FENCING SUPPLY

TOP RAIL TIE (TRT)



WHAT DOES THE TOP RAIL TIE (TRT) DO?

- Replaces rail notching or keeper screws.
- Distributes undue stress from the top rail to the strongest part of the post.
- Eliminates post failures at the routed holes from incorrect stressing.



WHAT CAN THE TRT DO FOR YOU?

- When you install your fence the bottom rail will not come out because it is held secure between the pipe. The upper rail still needs to be secured and the TRT fixes this problem for you.
- The TRT eliminates the need for notching which takes time and makes for very difficult disassembly if ever required, especially in cool climates.
- Adds a professional finish to the top rail adjustments.

Our TRT allows you to install vinyl fence without causing undue stress on the post by securely fastening the top rail within a PVC post.





DIRECT FENCING SUPPLY

DFS POST LEVELLING COLLARS (PLC)



DFS post levelling collars are simply the best post-to-pipe pole levelling system on the market today. Our PLC allows you to install your steel posts without using concrete.



SOME FACTS

- Stronger one-piece design
- Maximum adjustability—slot extends to outer diameter
- Quicker and more accurate than two-piece design
- Flexible enough to fit over slightly “mushroomed” pipe
- Internal ridge keeps it from sliding during installation
- Easy to repair the fence and replace the posts since they are not concreted into the ground
- Cleaner—no left over dirt tailings after post installation. Save money on labour, concrete the expense to agar holes and remove the dirt tailings.
- Quicker install, no need to wait for concrete to set and hope your posts do not move as the concrete dries.



Your customers will be pleased with a clean, damage-free installation—without the need of a skid steer, auger or concrete mixer. You will save money on vinyl because the PVC post length stays above grade—a six-foot fence requires only a six-foot PVC post. Our post collars have been proven in some of the harshest climates and most difficult soil conditions in Canada.

26

CALL TOLL-FREE: 1-888-751-5324

directfencingsupply.ca





DIRECT FENCING SUPPLY

CANADA'S TRUSTED FENCE SUPPLIER

TOLL FREE: 1-888-751-5324

PHONE: 306-242-7938

FAX: 306-668-1055

7385 LUTHERAN ROAD
COMP 20, SITE 411, RR#4
SASKATOON, SK S7K 3J7

INFO@DIRECTFENCINGSUPPLY.CA

WWW.DIRECTFENCINGSUPPLY.CA

