

DFS

VINYL PRODUCTS™

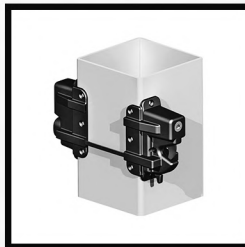


NATIONWIDE
INDUSTRIES™



HARDWARE COLLECTION

HINGES • LATCHES • ACCESSORIES



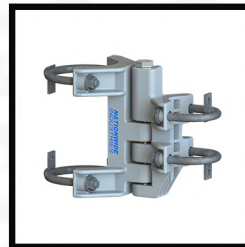
KLX-P2-BK



C2H200F-SD-BK



KLADV-P2SD-BK



CL-7212

INNOVATIVE PRODUCTS FOR THE FENCE INDUSTRY



VINYL HARDWARE

HINGES

NYLON



Point-Load Tested to 1500 lbs per pair!

CornerStone® 2 Non-Adjustable Self-Closing Hinge

- ▶ Post and Gate flanges: 1"(W) x 1"(D)
- ▶ Heavy duty design produced with durable glass-filled nylon
- ▶ 1/4" Allen wrench included for easy Turn-N-Go™ tension adjustment
- ▶ 20 pair per box @ 33lbs

C2H100N-SD-BK Black with stainless steel self-drilling screws

1
MILLION
Cycle
Warranty



Point-Load Tested to 1500 lbs per pair!

CornerStone® 2 Adjustable Self-Closing Hinge

- ▶ Horizontally adjustable to 0.98"
- ▶ Vertically adjustable to 0.875"
- ▶ Fits both right and left-hand applications
- ▶ 1/4" Allen wrench included for easy Turn-N-Go™ tension adjustment
- ▶ 20 pair per box @ 46lbs

C2H200F-SD-BK Black with stainless steel self-drilling screws

C2H200F-SD-WH White with stainless steel self-drilling screws

1
MILLION
Cycle
Warranty



Point-Load Tested to 1000 lbs per pair!

CornerStone® Adjustable Self-Closing Hinge

- ▶ Horizontally adjustable to 1 1/4"
- ▶ Vertically adjustable to 1/2"
- ▶ Fits both right and left-hand applications
- ▶ 20 pair per box @ 40lbs

CH200F-SD-BK Black with stainless steel self-drilling screws.

1
MILLION
Cycle
Warranty



VINYL HARDWARE



Point-Load
Tested to
2000 lbs
per pair!

CornerStone® 2 Adjustable Self-Closing Hinge

- ▶ Horizontally adjustable to 1.0"
- ▶ Vertically adjustable to 1.0"
- ▶ Fits both right and left-hand applications
- ▶ 1/4" Allen wrench included for easy Turn-N-Go™ tension adjustment
- ▶ 10 pair per box @ 30lbs

**1
MILLION
Cycle
Warranty**

C2H300F-SD-BK Black with stainless steel self-drilling screws
C2H300F-SD-WH* White with stainless steel self-drilling screws

*Special Order

STAINLESS STEEL

Adjustable Stainless Steel Self-Closing Hinge

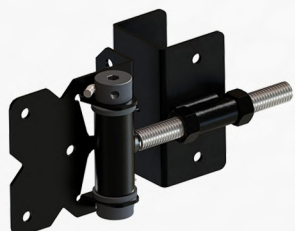


- ▶ Post flange: 3.5"(H) x 3.5"(W) x 3.5"(D)
- ▶ Gate flange: 3.5"(H) x 2.75"(W) x 1.25"(D)
- ▶ Horizontally adjustable
- ▶ Enclosed spring with tension adjustment
- ▶ 12 pair per box @ 42lbs

NW171NASCA-SSBD-BK Black with stainless steel self-drilling screws
NW171NASCA-SSWD-WH White with stainless steel self-drilling screws



VINYL HARDWARE

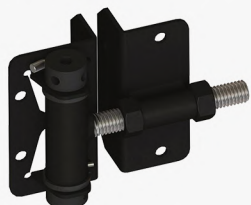


Adjustable Stainless Steel Self-Closing U-Hinge

- ▣ Enclosed spring with tension adjustment
- ▣ 20 per box
- ▣ 8 case minimum order

NW6082BU-SSBD-BK Black for 2 1/2" gate frames

NW6082BU-SSWD-WH White for 2 1/2" gate frames

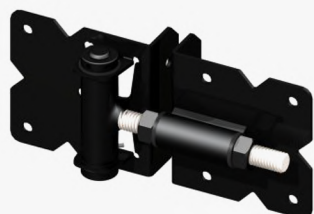


Adjustable Stainless Steel Self-Closing Hinge Small Profile

- ▣ 12 pair per box @ 29lbs

NW171SCP5-SSBD-BK Black with stainless steel self-drilling screws

MILD STEEL



Adjustable Steel Self-Closing Hinge

- ▣ Post Flange (3 1/2" x 1 1/4")
- ▣ Gate Flange (3 1/2" x 1 1/4")
- ▣ Horizontally adjustable
- ▣ Spring tension adjustable
- ▣ 10 pair per box @ 38lbs

SV171-BK Black

SV171-WH White



Steel 2" Self-Closing Hinge Wrap Around

- ▣ Post Flange (3 1/2" x 1 1/4")
- ▣ Gate Flange 2" Wrap-Around
- ▣ Horizontally adjustable
- ▣ Spring tension adjustable
- ▣ 12 pair per box @ 45lbs
- ▣ (NW6082BSCP-SSx Equivalent)

SV38967-BK Black

SV38967-WH White

3

CALL TOLL-FREE: 1-888-751-5324

directfencingsupply.ca

LATCHES

NYLON



Keystone® Latch

- ▶ Locking feature accessible from both sides
- ▶ Reversible for right-hand or left-hand use
- ▶ Glass-filled nylon housing
- ▶ Thumb release button on one side, gravity latch lever on opposite side
- ▶ Stainless steel screws included
- ▶ 20 per box @ 23lbs

KLADV-P2SD-BK Black (Nylon)

KLADV-P2SD-WH White (Nylon)

**1
MILLION**
Cycle
Warranty



Keystone® X2 external Mount Latch (Lockable)

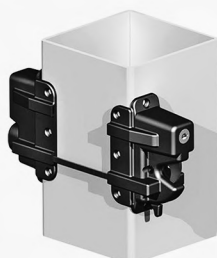
- ▶ 1-sided
- ▶ 20 per box @ 20lbs

KLX2-P1SD-BK Black with stainless steel self-drilling screws

- ▶ 2-sided
- ▶ Slimline design
- ▶ 20 per box @ 13lbs

KLX2-P2SD-BK Black with stainless steel self-drilling screws

**1
MILLION**
Cycle
Warranty



Keystone® X external Mount Latch

- ▶ Marked in 1/2" increments for quick, easy and accurate fitting to post sizes 2"- 5"
- ▶ Flat design safely encloses spindle ends
- ▶ 20 per box @ 22lbs
- ▶ Use with KLX-RPA for chain link

KLX-P2SD-BK Black (Nylon)

**1
MILLION**
Cycle
Warranty



VINYL HARDWARE



Keystone® Self-Locking PanicLatch

- ▶ Self-Locking anti-tamper design
- ▶ Easy exit with large button
- ▶ Secure Entry with 6 pin key
- ▶ 6 per box @ 20lbs
- ▶ Use with KPL-RPA for chain link

KPL-P2SD-BK Black with self-drilling screws.

**1
MILLION
Cycle
Warranty**



Mechanical Keypad Lever Lock

- ▶ Keeper has vertical adjustment and needs to be located on the post
- ▶ Fits a gate frame of 2"-5"
- ▶ Reversible for left and right handed use
- ▶ 10 per box @ 15lbs
- ▶ 2-sided

2835JBMGDC Black

**1
MILLION
Cycle
Warranty**



Adapter for Keypad Lever Lock

- ▶ Mechanical Combination Locks - No electronics
- ▶ Passage function may be set for exiting without code
- ▶ Easy code change with any amount of numbers
- ▶ Dead locking spring latch
- ▶ Slip clutch design - No damage to lock if handle is pushed down too hard
- ▶ Locks never need lubrication
- ▶ 10 per box

2835-ADAPTER-BK Black



VINYL HARDWARE

Armor Latch®



- ▶ Locks & unlocks from either side
- ▶ Add aluminum cover plates for metal look and color
- ▶ Re-keyable to home locks
- ▶ Reversible for left or right hand use
- ▶ Easy installation including horizontal & vertical adjustability
- ▶ Works with double drive gates
- ▶ Fits gate frames from 1-1/2" to 5" deep
- ▶ 10 per box @ 21lbs

NW6244-SD-FB Flat Black with self-drilling stainless steel screws.

**1
MILLION**
Cycle
Warranty

Traverse Latch



- ▶ Fits 5" Fence Posts
- ▶ Reversible for mounting/install
- ▶ No drilling holes through post
- ▶ Lock & unlocks from both sides
- ▶ Uses a 6-pin key cylinder

KLTRV-500-SD-BK Black

**1
MILLION**
Cycle
Warranty

Magnetic Side Pull Latch



- ▶ 20 per box

SPL100-SD-BK Black with self-drilling screws.

Trident Pool Latch



- ▶ SAFE-NOTCH® feature
- ▶ LATCH WHEN LOCKED™ feature
- ▶ Easy to see the maximum amount of gap width
- ▶ Easy to use markings show proper gate alignment
- ▶ Enhanced Knob Design
- ▶ Angled Key Hole
- ▶ 20 per box @ 20lbs

TRIDENT10-BK-SD Black

**1
MILLION**
Cycle
Warranty



VINYL HARDWARE

STAINLESS STEEL

Stainless Steel Gate Latch



- ▶ Strike flange: 1.75"(W) x 3.5"(H) x 1.25"(D)
- ▶ Latch flange: 2.5"(W) x 5.5"(H) x 1.5"(D)
- ▶ Allows entry from both sides
- ▶ Mounts around corner of post and gate frame
- ▶ Pad-lockable on both sides – up to 5" post
- ▶ .63" Strike Bar
- ▶ Return spring for reversible mounting
- ▶ Stainless steel screws included
- ▶ 20 per box @ 36lbs

NW38308NUA-SSBD Black

NW38308NUA-SSWD White

Stainless Steel Slim Line Latch



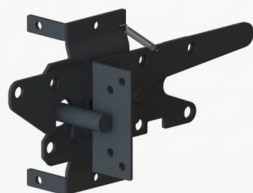
- ▶ Strike flange: 3.12"(W) x 3.5"(H) x 1.38"(D)
- ▶ Latch flange: 1.88"(W) x 5.5"(H) x 1.5"(D)
- ▶ Mounts around corner of post and gate frame
- ▶ Pad-lockable on both sides – Locking slide switch on latch arm
- ▶ Allows entry from both sides
- ▶ Reversible mounting (right or left handed)
- ▶ .63" Strike bar
- ▶ Stainless steel screws included
- ▶ 20 per box @ 44lbs

NW6255-SD-BK Black



VINYL HARDWARE

MILD STEEL

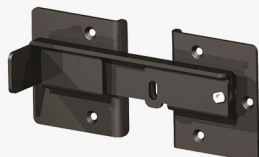


Gate Latch with Extended Lock

- ▶ Deluxe Post Latch **Straight Handle Version**
- ▶ Adjustable For 'Right' or 'Left' Hand Gate Opening
- ▶ Pad-lockable on both sides of 4" or 5" posts
- ▶ 20 per box @ 34lbs

SV38308NUAS-BK Black

SV38308NUAS-WH White



Flip Latch

- ▶ Commercial grade
- ▶ Great for dumpster use
- ▶ Pad-lockable
- ▶ Zinc plate steel with black powder coated finish
- ▶ 4 Stainless steel through-bolt hardware included
- ▶ 10 per box @ 37lbs

NW6169-SD-BK Black



Two-Side Activated Latch with Spring

- ▶ Deluxe Post Latch **Straight Handle Version**
- ▶ Adjustable for 'Right' or 'Left' Hand Gate Opening
- ▶ Pad-lockable On One Side Only
- ▶ Ideal For Narrow Gate Frames
- ▶ 40 per box @ 29lbs

SV6068A-BK Black

SV6068A-WH White



VINYL HARDWARE

ACCESSORIES

NYLON

Gate Handle



- ▶ Made with durable glass-filled nylon with UV inhibitors
- ▶ Flanges are each 1.25"(W) x 1.25"(D) for durable attachment
- ▶ Overall height is 7" and handle is 1.75" deep
- ▶ Designed for our Canadian climate
- ▶ 50 per box

GT-GHSD-BK Black with stainless steel self-drilling screws
GT-GHSD-WH White with stainless steel self-drilling screws

Gate Handle with Bumper



- ▶ Made with durable glass-filled nylon with UV inhibitors
- ▶ Flanges are each 2"(W) x 1.75"(D) for durable attachment
- ▶ Overall height is 4.5" and handle is 1" deep
- ▶ Very comfortable and easy to grasp
- ▶ 50 per box @ 25lbs
- ▶ Also available in quantities of 10

NW6143S-SD-BK Black with stainless steel self-drilling screws
NW6143S-SD-WH White with stainless steel self-drilling screws

*Rubber pad backing absorbs gate slamming shock, reducing latch wear

Gate Handle



- ▶ Made with durable glass-filled nylon with UV inhibitors
- ▶ Flanges are each 1.5"(W) x 1.25"(D) for durable attachment
- ▶ Overall height is 5" and handle is .75" deep
- ▶ Very comfortable and easy to grasp
- ▶ 50 per box @ 8lbs

NW314S-BK-SD Black with stainless steel self-drilling screws.
NW314S-WH-SD White with stainless steel self-drilling screws.



VINYL HARDWARE



36" Stainless Steel Key Locking Drop Rod

- ▶ Add the appeal of a key lock to your drop rod
- ▶ Anti-theft protection
- ▶ The handle & brackets are made of low-maintenance, glass filled nylon
- ▶ The rods are 300 series stainless steel
- ▶ Available with Black or White brackets
- ▶ 2-sided bracket attachment
- ▶ Stainless steel screws included
- ▶ 10 per box @ 36lbs

NW38305KL-36SSB-SD Black

NW38305KL-36SSW-SD White

STAINLESS STEEL



36" Stainless Drop Rods with Holder

- ▶ No locking nibs
- ▶ Includes holder for "up" position
- ▶ 10 per box @ 36lbs

NW38305H-36SSBD Black with stainless steel self-drilling screws

NW38305H-36SSWD White with stainless steel self-drilling screws



Shotgun® Gate Closer

- ▶ One SKU closes any gate up to 250lbs*
- ▶ Anti-slam technology
- ▶ Adjustable closing speed
- ▶ No oil therefore no leaks
- ▶ 10 per box @ 67lbs

SHOTGUN-BK Black

*Tested on a 6' high, 6' wide. Needs a gate stop at 90 degrees



VINYL HARDWARE



Guards
Against
Sagging and
Warping!

Gate Brace

- ▶ Aluminum brace
- ▶ Available in powder-coated black or white
- ▶ Fits 4' x 4' to 6' x 6' gates
- ▶ 20 per box

NW6132-SD-BK Black

NW6132-SD-WH White

MILD STEEL

Gate Wheel



- ▶ Stainless steel bracket and spring
- ▶ Swivel design for ease of use
- ▶ 2-sided attachment for added strength
- ▶ Nationwide's V-notch™ styling
- ▶ May be used on any square profile
- ▶ Powder-coated finish
- ▶ Stainless steel screws included
- ▶ 10 per box @ 38lbs
- ▶ Easily reversible for use on left or right-handed gates

GW1-BK Black

GW1-WH White



36" Heavy Duty Steel Drop Rod

- ▶ Utilizes Standard 36" Pad-Lockable Zinc Rod
- ▶ Bracket Flange (1 5/8" W x 1 1/2" D x 3" H)
- ▶ 20 pair per box @ 38lbs
- ▶ (NW38305N-36SSx Equivalent)

SV38305N-36BK Black

SV38305N-36WH White



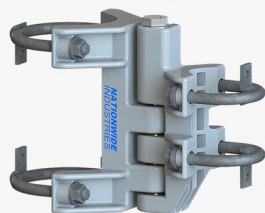
CHAIN LINK HARDWARE

HINGES

Heavy Duty Self-Closing Hinge

- ▶ Fits 1-3/8" to 1-7/8" gate frames
- ▶ Fits 2-3/8" to 2-7/8" posts
- ▶ 10 per box @ 32lbs

CL-7211-BK Black
CL-7211-GY Gray



Heavy Duty Self-Closing Hinge

- ▶ 4 Fits 1-3/8" to 1-7/8" gate frames
- ▶ Fits 4" posts
- ▶ 10 per box @ 35lbs

CL-7212-BK Black
CL-7212-GY Gray

CornerStone® Round Post Hinge

- ▶ Shims to 1-7/8", 2-3/8", 2-5/8" or 2-7/8" post and 1-3/8" or 1-5/8" frame
- ▶ Horizontally adjustable up to 1-1/4"
- ▶ Vertically adjustable up to 1/2"
- ▶ Fits both right and left hand applications
- ▶ Includes steel self-drilling screws
- ▶ 20 per box @ 40lbs

CH200FR-SD-BK Black.



1
MILLION
Cycle
Warranty

LATCHES

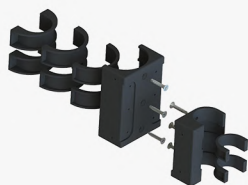


Keystone® X-External Mount Latch

- ▶ Marked in 1/2" increments for quick, easy and accurate fitting to square post sizes 2" - 5"
- ▶ Flat design safely encloses spindle ends
- ▶ 20 per box @ 22lbs
- ▶ (use with KLX-RPA for chain link)

KLX-P2SD-BK Black

1
MILLION
Cycle
Warranty



KLX Round Post Adapter Kit

- ▶ Includes mounting screws
- ▶ 17 per box @ 23lbs
- ▶ (use with KLX-P2)

KLX-RPA-BK Black

1
MILLION
Cycle
Warranty



Keystone® Self-Locking PanicLatch™

- ▶ 6 per box @ 9lbs
- ▶ (use with kpl-rpa for chain link)

KPL-P2SD-BK Black.

1
MILLION
Cycle
Warranty



Keystone® Self-Locking PanicLatch™ Round Post Adaptor

- ▶ Keystone® Self-Locking Paniclatch™ sold separately (adapter only)
- ▶ Designed to work on 2" to 6-5/8" on the latch side (post) and 1-3/8" to 2" on the keeper side (gate).
- ▶ 6 per box @ 9lbs

KPL-RPA-BK Black.

1
MILLION
Cycle
Warranty



CHAIN LINK HARDWARE

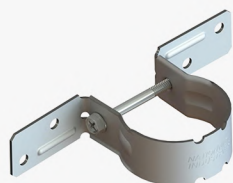
ACCESSORIES



4" Nylon Cantilever Roller with Shield

- ▶ 4" x 2-3/8"
- ▶ 2 per box @ 35lbs

WI-CR3-N-TBC (CL-CRNYL4C-S)



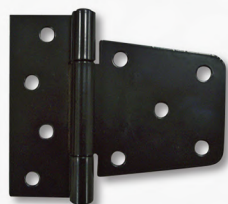
Chain Link to Wood Panel Brackets

- ▶ 2-3/8"
- ▶ Pre-Galvanized
- ▶ No screws included
- ▶ 4 Chain Link Post to Wood Panels
- ▶ 50 per box @ 23lbs

NW6287-PG (WI-WSA-A)



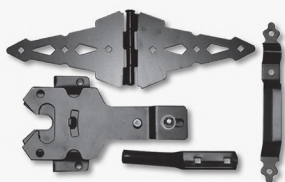
WOOD HARDWARE



Blunt 'T' Hinge

- ▶ Zinc plate steel with black finish
- ▶ 1 3/4" lag screws for fence
- ▶ 1 3/4" lag screws for gate
- ▶ 20 pair per box @ 40lbs

NW6172-BK Black

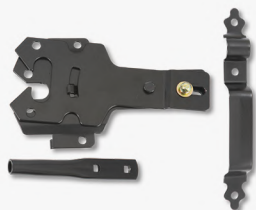


Contemporary Walk Gate Set

- ▶ Zinc plate steel with black finish
- ▶ Screws with black finish
- ▶ Includes: pair of 8" double strap hinges, post latch and 9" handle
- ▶ 10 set per box @ 53lbs

NW-38948CQ Black

Also Available in Hammered Bronze



Contemporary Gate Latch with Handle

- ▶ Larger opening allows for more play of strike bar
- ▶ 20 per box

NW38310WQ Black

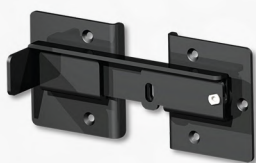


8" Contemporary Double Strap Hinge

- ▶ Zinc plate steel with black finish
- ▶ 1 3/4" lag screws with black finish
- ▶ 20 pair per box @ 61lbs

NW38944Q Black

Also Available in Hammered Bronze



Flip Latch

- ▶ Commercial grade
- ▶ Great for dumpster use
- ▶ Pad-lockable
- ▶ Zinc plate steel with black powder coated finish
- ▶ Stainless steel through-bolt hardware included
- ▶ 10 per box @ 37lbs

NW6169-BK Black

15

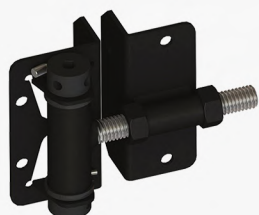
CALL TOLL-FREE: 1-888-751-5324

directfencingsupply.ca



ORNAMENTAL HARDWARE

HINGES



Adjustable Self-Closing Stainless Steel Hinge

- ▶ Stainless steel, powder coated
- ▶ Easy tension adjustment
- ▶ Larger easy to hold pin
- ▶ Allen wrench included
- ▶ 12 pair per box @ 29lbs

NW171SCP5-SSBD-SD Black (self-drilling screws)



Point-Load Tested to 1500 lbs per pair!

CornerStone® Adjustable Self-Closing Hinge

- ▶ Fully adjustable horizontally and vertically
- ▶ Same spring and barrel as the CH090
- ▶ 1/4" Allen wrench included for tension adjustment
- ▶ 20 pair per box @ 26lbs

CH095F-SD-BK Black with stainless steel self-drilling screws

1 MILLION
Cycle
Warranty



Point-Load Tested to 1500 lbs per pair!

CornerStone®2 Non-Adjustable Self-Closing Hinge

- ▶ Post and Gate flanges: 1"(W) x 1"(D)
- ▶ Heavy duty design produced with durable glass-filled nylon
- ▶ 1/4" Allen wrench included for easy Turn-N-Go™ tension adjustment
- ▶ 20 pair per box @ 33lbs

C2H100N-SD-BK Black with stainless steel self-drilling screws

1 MILLION
Cycle
Warranty



ORNAMENTAL HARDWARE



CornerStone® Adjustable Self-Closing Hinge

- ▶ Horizontally adjustable to 1 1/4"
- ▶ Vertically adjustable to 1/2"
- ▶ Fits both right and left-hand applications
- ▶ 1/4" Allen wrench included for tension adjustment
- ▶ 20 pair per box @ 40lbs

CH200F-SD-BK Black with stainless steel self-drilling screws.

**1
MILLION**
Cycle
Warranty



Standard Square Hinge Set

- ▶ Fits 1.75" Gate Frame
- ▶ Black

ORGH17520-BK fits 2" Post

ORGH17525-BK fits 2-1/2" Post

LATCHES



Keystone® X2 eXternal Mount Latch (Lockable)

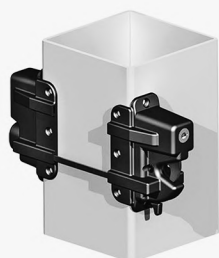
- ▶ 1-sided
- ▶ 20 per box @ 20lbs

KLX2-P1SD-BK Black with stainless steel self-drilling screws

- ▶ 2-sided
- ▶ Slimline design
- ▶ 20 per box @ 13lbs

KLX2-P2SD-BK Black with stainless steel self-drilling screws

1
MILLION
Cycle
Warranty



Keystone® X eXternal Mount Latch

- ▶ Marked in 1/2" increments for quick, easy and accurate fitting to post sizes 2" - 5"
- ▶ Flat design safely encloses spindle ends
- ▶ 20 per box @ 22lbs
- ▶ Use with KLX-RPA for chain link

KLX-P2SD-BK Black (Nylon)

1
MILLION
Cycle
Warranty



Keystone® Self-Locking PanicLatch

- ▶ Self-Locking anti-tamper design
- ▶ Easy exit with large button
- ▶ Secure Entry with 6 pin key
- ▶ 6 per box @ 20lbs
- ▶ Use with KPL-RPA for chain link

KPL-P2SD-BK Black with self-drilling screws.

1
MILLION
Cycle
Warranty



Fork Latch Assembly

- ▶ Fits 1.75" Gate Frame
- ▶ Black

ORGL17520-BK fits 2" Post

ORGL17525-BK fits 2-1/2" Post



ORNAMENTAL HARDWARE



Trident Pool Latch

- ▶ SAFE-NOTCH® feature
- ▶ LATCH WHEN LOCKED™ feature
- ▶ Easy to see the maximum amount of gap width
- ▶ Easy to use markings show proper gate alignment
- ▶ Enhanced Knob Design
- ▶ Angled Key Hole
- ▶ 20 per box @ 20lbs

TRIDENT10-BK-SD Black

**1
MILLION**
Cycle
Warranty



Slim Line Latch

- ▶ Strike flange: 3.12"(W) x 3.5"(H) x 1.38"(D)
- ▶ Latch flange: 1.88"(W) x 5.5"(H) x 1.5"(D)
- ▶ Mounts around corner of post and gate frame
- ▶ Pad-lockable on both sides – Locking slide switch on latch arm
- ▶ Allows entry from both sides
- ▶ Reversible mounting (right or left handed)
- ▶ .63" Strike bar
- ▶ Stainless steel screws included
- ▶ 20 per box @ 44lbs

NW6255-SD-BK Black



Traverse Latch

- ▶ Locks and unlocks from both sides
- ▶ Easy to install
- ▶ For 2" fence posts
- ▶ No drilling holes through your posts
- ▶ Time saver for your installers
- ▶ 20 per box

KLTRV-20L-SD-BK Black, Left Hand, With self-drilling screws.

KLTRV-20R-SD-BK Black, Right Hand, With self-drilling screws.

**1
MILLION**
Cycle
Warranty



ORNAMENTAL HARDWARE

ACCESSORIES



Gate Handle with Bumper

- ▶ Made with durable glass-filled nylon with UV inhibitors
- ▶ Flanges are each 2"(W) x 1.75"(D) for durable attachment
- ▶ Overall height is 4.5" and handle is 1" deep
- ▶ Very comfortable and easy to grasp
- ▶ 50 per box @ 25lbs
- ▶ Also available in quantities of 10

NW6143S-SD-BK Black with stainless steel self-drilling screws

NW6143S-SD-WH White with stainless steel self-drilling screws

*Rubber pad backing absorbs gate slamming shock, reducing latch wear



Gate Handle

- ▶ Made with durable glass-filled nylon with UV inhibitors
- ▶ Flanges are each 1.5"(W) x 1.25"(D) for durable attachment
- ▶ Overall height is 5" and handle is .75" deep
- ▶ Very comfortable and easy to grasp
- ▶ 50 per box @ 8lbs

NW314S-SD-BK Black with stainless steel self-drilling screws.

NW314S-SD-WH White with stainless steel self-drilling screws.



36" Stainless Steel Key Locking Drop Rod

- ▶ Add the appeal of a key lock to your drop rod
- ▶ Anti-theft protection
- ▶ The handle & brackets are made of low-maintenance, glass filled nylon
- ▶ The rods are 300 series stainless steel
- ▶ Available with Black or White brackets
- ▶ 2-sided bracket attachment
- ▶ 10 per box @ 36lbs

NW38305KL-36SSB-SD Black with stainless steel self-drilling screws

NW38305KL-36SSW-SD White with stainless steel self-drilling screws



ORNAMENTAL HARDWARE



36" Stainless Steel Drop Rod

- ▶ 5/8" diameter
- ▶ Screws included
- ▶ Dual guides
- ▶ Pad-lockable
- ▶ Retention-ears for theft prevention
- ▶ 10 per box @ 23lbs

NW38305H-36SSBD Black
NW38305H-36SSWD White



Shotgun® Gate Closer

- ▶ One SKU closes any gate up to 250lbs*
- ▶ Anti-slam technology
- ▶ Adjustable closing speed
- ▶ No oil therefore no leaks
- ▶ 10 per box @ 67lbs

SHOTGUN-BK Black

*Tested on a 6' high, 6' wide. Needs a gate stop at 90 degrees



36" Heavy Duty Steel Drop Rod

- ▶ Utilizes Standard 36" Pad-Lockable Zinc Rod
- ▶ Bracket Flange (1 5/8" W x 1 1/2" D x 3" H)
- ▶ 20 pair per box @ 38lbs
- ▶ (NW38305N-36SSx Equivalent)

SV38305N-36BK Black
SV38305N-36WH White



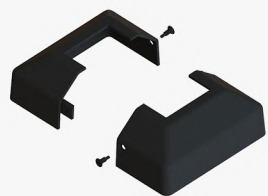
ORNAMENTAL HARDWARE



Two Piece Cover Plate for 2" Ornamental Floor Bracket

- ▶ Accommodates a 2" x 2" post
- ▶ Profile height: 1 7/8"
- ▶ Flange: 4 3/4" x 4 3/4"
- ▶ Fits Over NW302
- ▶ 50 per box @ 24lbs

NW6243-BK Black



Two Piece Cover Plate for 2 1/2" Ornamental Floor Bracket

- ▶ Accommodates a 2 1/2" x 2 1/2" post
- ▶ Profile height: 1.9"
- ▶ Flange: 5 1/5" x 5 1/5"
- ▶ Fits Over NW6187
- ▶ 50 per box @ 29lbs

NW6269-BK Black



CORNERSTONE® & CORNERSTONE®2

SELF CLOSING NYLON HINGES

1 MILLION
Cycle
Warranty

SERIES	WOOD	ORNAMENTAL	VINYL	GATE GAP	GATE RATING	ADJUSTABILITY	SCREWS*	COLOR	QTY/CASE
CH090		X		.75"	60lb.	Vertical	SD/ZD	Black/White	20(prs)
CH095F		X		.69"-1.92"	60lb.	Fully	SD/ZD	Black/White	20(prs)
CH100N	X		X	.5"	75lb.	None	SD/ZD	Black/White	20(prs)
CH101V		X		.1"	75lb.	Vertical	SD/ZD	Black	20(prs)
CH102V		X		.23"	75lb.	Vertical	SD/ZD	Black/White	20(prs)
CH200F		X		.67"-1.87"	75lb.	Fully	SD/ZD	Black/White	20(prs)
CH300F	X		X	.4"-1.3"	75lb.	Fully	SD/SS	Black/White	20(prs)
CH300H	X		X	.3"-2"	75lb.	Horizontal	SD/SS	Black/White	20(prs)
CH300N	X		X	.5"	75lb.	None	SD/SS	Black/White	20(prs)
CH350F	X		X	.4"-1.65"	150lb.	Fully	SD/SS	Black/White	10(prs)
CH100/300N			X	.5"	75lb.	None	SD/SS	Black	20(prs)
C2H100N		X	X	.75"	75lb.	None	SD/ZD	Black/White	20(prs)
C2H200F		X	X	.55"-1.53"	75lb.	Fully	SD/ZD	Black	20(prs)
C2H300F	X		X	.75"-1.75"	75lb.	Fully	SD/SS	Black	10(prs)
C2H120NB		X	X	.75"	135lb.	None	SD/ZD	Black	20(prs)
C2H121NB		X		.1"	135lb.	None	SD/ZD	Black	20(prs)

Screws* SD-stainless steel self-drilling, ZD-zinc plated steel self-drilling, SS-Stainless Steel



23

*CornerStone® & CornerStone®2 hinges tested to 1 million weighted cycles on a 6ft x 4ft see chart above privacy gate

CALL TOLL-FREE: 1-888-751-5324

directfencingsupply.ca



GAP CHART

ADJUSTABLE HINGES

PART NUMBERS	GATE GAP MIN	GATE GAP MAX	TOTAL ADJ.	SELF-CLOSING
CH200F	0.67"	1.87"	1.2"	Yes
CH200F R	0.67"	1.87"	1.2"	Yes
CH300F	0.4"	1.3"	0.9"	Yes
CH300H	0.3"	2"	1.7"	Yes
CH350F	0.4"	1.65"	1.25"	Yes
HBH1	0.71"	2.22"	1.51"	No
HBH1SC	0.71"	2.22"	1.51"	Yes
NW093V	1"	1.81"	0.81"	Yes
NW171NASC	0.49"	1.16"	0.67"	Yes
NW171NASCA	0.34"	1.23"	0.89"	Yes
NW171SCP	0.34"	1.36"	1.02"	Yes
NW171SCP2	0.34"	1.36"	1.02"	Yes
NW171SCP3	0.49"	1.31"	0.82"	Yes
NW171SCP4	0.45"	1.49"	1.04"	Yes
NW171SCP5	0.45"	1.49"	1.04"	Yes
NW171SCPT	0.34"	1.36"	1.02"	Yes
NW172	0.34"	2.52"	2.18"	No
NW6056	0.2"	2.03"	1.83"	No
NW6082SCP	0.34"	2.31"	1.97"	Yes
NW6082B	0.34"	2.03"	1.69"	Yes
NW6159	0.34"	2.52"	2.18"	No
NW6218	3.25"	6.55"	3.3"	No
NW38950N	0.52"	1.8"	1.28"	No
NW38951N	0.52"	1.8"	1.28"	No
NW3891NWV	0.52"	1.81"	1.29"	No
NW38952SCR	0.5"	2"	1.5"	Yes
NW38953SCR	0.35"	2"	1.65"	Yes
NW38954	0.52"	2.55"	2.03"	No
NW38955	0.38"	2.3"	1.92"	No
NWSS-HD-SC	0.37"	1.37"	1"	Yes
NWSS-HDT-SC	0.37"	1.37"	1"	Yes
NAUTILUS	1.05"	1.55"	0.50"	Yes
C2H200F	0.55"	1.53"	.98"	Yes
C2H300F	0.75"	1.75"	1.0"	Yes

NON-ADJUSTABLE HINGES

PART NUMBERS	GAP	SELF-CLOSING
CH090	0.75"	Yes
CH100N	0.5"	Yes
CH102V	0.23"	Yes
CH300N	0.5"	Yes
NW093	0.6"	Yes
NW093A	0.55"	Yes
NW093J	0.6"	Yes
NW094L	0.5"	Yes
NW095	0.5"	Yes
NW096	0.5"	Yes
NW149	0.89"	No
NW216	0.74"	No
NW6189	3"	No
C2H100N	0.75"	Yes

LATCHES

PART NUMBERS	GATE GAP MIN	GATE GAP MAX	TOTAL ADJ.
AQUA	0.5"	2.5"	2"
TRIDENT	0.375"	1.5"	1.12"
PROTECTOR	0.5"	2.5"	2"
MANTA	.31"	1.31"	1"
ORNAMAG	.31"	1.43"	1.12"
KLX-RPA	1"	2.1"	1.1"
NW6244	0.5"	1.5"	1"
KLX2	0.5"	2"	1.5"
KPL	0.45"	1.45"	1"
KLADV-M2	0.35"	1.67"	1.32"
KLADV-P2	0.46"	1.83"	1.37"
KLX-P2	0.66"	1.78"	1.12"
NW38340Q	0	4.25"	4.25"
RUSL1-BK	0	1.62"	1.62"
NW38203Q	0	2.37"	2.37"
NW6169	0.75"	2.75"	2"
GSL-DD	2.25"	3.75"	1.5"

CHAIN LINK

PART NUMBERS	GATE GAP MIN	GATE GAP MAX	TOTAL ADJ.	SELF-CLOSING
CL-CSL212	2"	7"	5"	
CL-CSL3	2"	6.8"	4.8"	
CL-CSL4	2"	5.5"	.35"	
CL-CDL	2.38"	5.5"	3.12"	
CL-7210 1.38/2.38	1.38"	2.81"	1.43"	Yes
CL-7210 1.38/2.88	1.6"	2.97"	1.37"	Yes
CL-7210 1.63/2.38	1.5"	2.87"	1.37"	Yes
CL-7210 1.63/2.88	1.5"	3"	1.4"	Yes
CL-RDL	1.75"	4.125"	2.375"	

*Hinge Gap is calculated using SUPPLIED Fasteners;different hardware may change minimum value.

DFS
VINYL PRODUCTS™

DFS
DIRECT FENCING SUPPLY

NATIONWIDE
INDUSTRIES
MALDEN
METALS

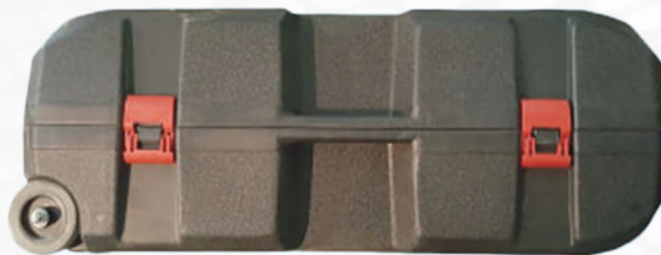
POST POUNDER



The DFS Post Pounder uses a 2 stroke 52CC gasoline engine that has the power you need to drive your pipe into the ground. Built for durability and power, this versatile post pounder will not only handle the galvanized steel pipe for a vinyl fence but it also accommodates other sizes of posts and pipe. The sleeve adaptors that are included are 2", 2.75", and 4".

The DFS Post Pounder will save you time and the back-breaking effort needed to pound your pipe in by hand. Put it to the test and you will see its uncompromising quality and effortless post-pounding. Your post pounder also comes with a fuel mixing can, tool kit, grease, and a rugged carrying case making portability even easier.

Save time and money with your DFS Post Pounder.



25

CALL TOLL-FREE: 1-888-751-5324

directfencingsupply.ca



PROFESSIONAL VINYL FENCE ROUTER TEMPLATES



No need to spend thousands of dollars on a CNC router to router your posts. Stock blank posts and use the DFS router template kit to router posts on site saving time and money.

The DFS router template kit creates an accurate cut, with crisp lines and a snug fit. Routing posts by hand without a template can be tricky and it's difficult to ensure a perfect fit. One small mistake can cause a post to be unstable. Every router cut with the DFS router template kit ensures consistency and adds to the longevity of your fence.



Not every yard has level terrain. Installing vinyl fences over terrain that changes in elevation makes it difficult to ensure the fence remains sturdy and the installation looks professional. Using pre-routed posts leaves you with limited options. DFS router template kit can be adjusted allowing the top and bottom rails to be lowered or heightened dependent on the grade of your yard.

Use the DFS router template kit for privacy fence with two rails or up to four rails at a time for our Eldorado IV or Sunnydale fence styles. Building gates is time-consuming without a template. We make it easy to router the two uprights at the same time. Improve the look of your gate on the unlevel ground by keeping the top gate rail level with the top of the fence while the bottom follows the grade. This is also a great help to keep small dogs from escaping your backyard.

26

CALL TOLL-FREE: 1-888-751-5324

directfencingsupply.ca

DFS

VINYL PRODUCTS™

CANADA'S TRUSTED FENCE SUPPLIER

TOLL FREE: 1-888-751-5324

PHONE: 306-242-7938

FAX: 306-668-1055

7385 LUTHERAN ROAD
COMP 20, SITE 411, RR#4
SASKATOON, SK S7K 3J7

INFO@DIRECTFENCINGSUPPLY.CA

WWW.DIRECTFENCINGSUPPLY.CA



NATIONWIDE
INDUSTRIES

